

Lloyd's List Intelligence

Marine Casualty Profiles

International Maritime Statistics Forum

Hong Kong 31st May 2011

Setting standards in maritime intelligence

Wally Mandryk Lloyd's List Intelligence

lloydslistintelligence.com

Outline

- Definitions, Sources and Methods
- Recent Casualty Trends
- Casualty Profiles: what where when and why
- Different Profiling Approaches

Serious Casualty – Definition

- Serious Structural or machinery damage likely to result in a vessel being declared a constructive Total Loss
 - Structural or Machinery damage rendering a vessel unseaworthy or requiring extensive repairs
 - Disablement or breakdown resulting in a vessel requiring the assistance of salvors or the abandonment of a voyage or otherwise involving the vessel being removed from service for a reasonable period for repairs
 - Any other incident resulting from damage considered to be serious enough to prevent a vessel from continuing in service
- And
- *An incident resulting in human fatalities*

Serious Casualty – Exclusions

- Incidents involving *deliberate* attempts to damage, disable or interrupt the operation of a vessel:
- Piracy
- War damage

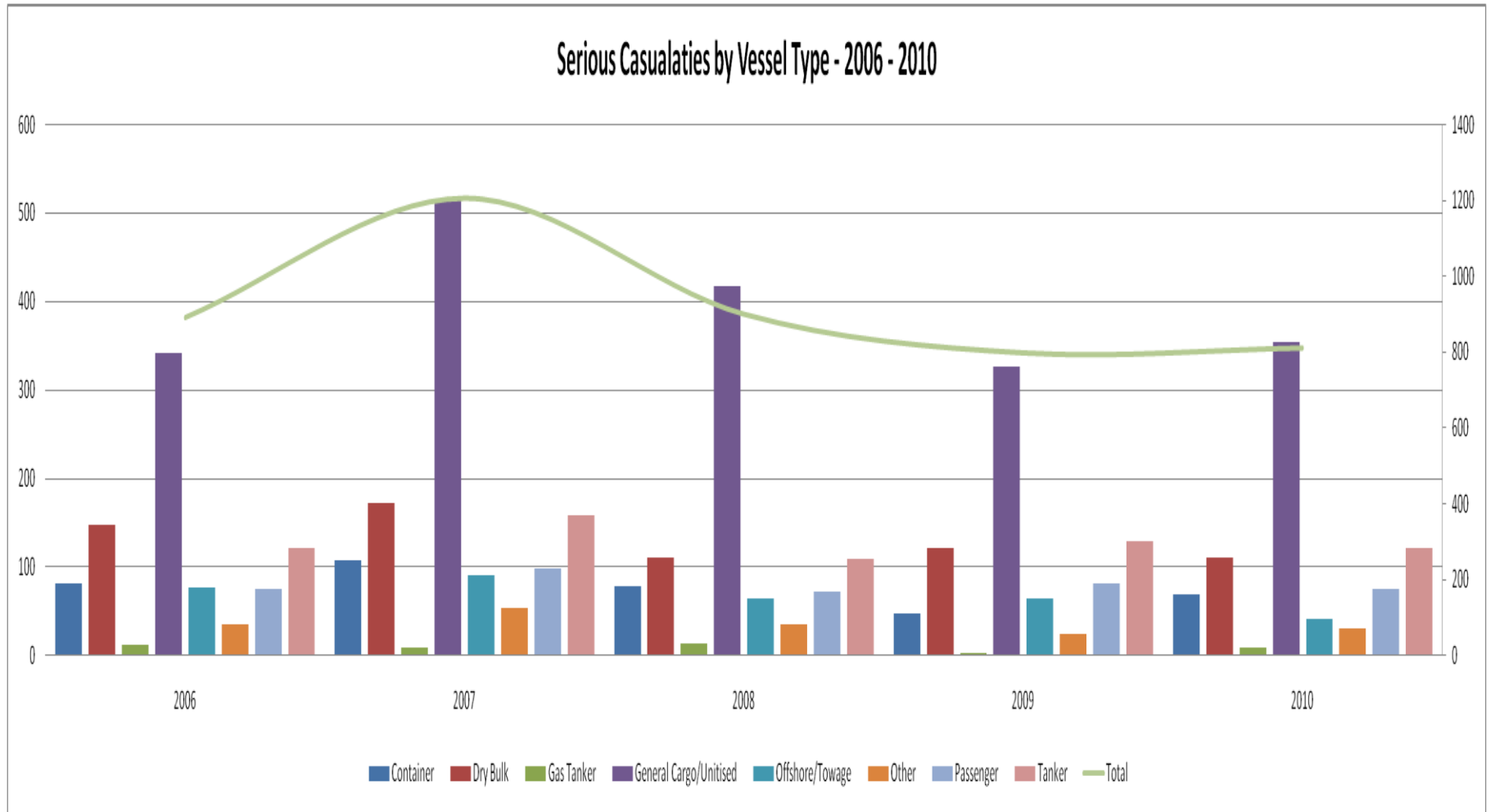
Fleet Population

- Commercial Vessels > 100 GT
- Excluding Fishing Vessels
- 85,000 Vessels

Source

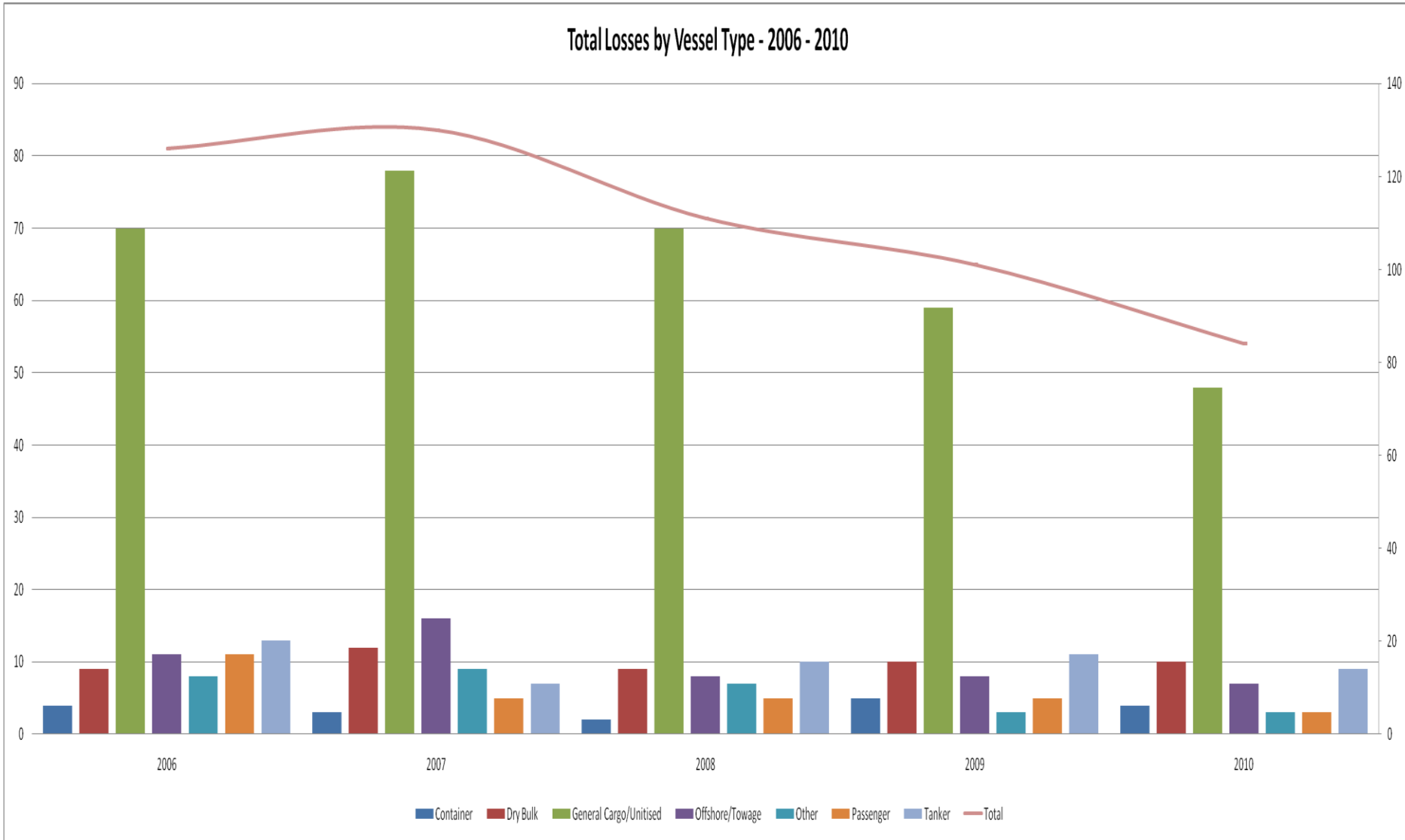
- Lloyd's List Intelligence 24/7 Casualty reporting Service:
- 21,000 + Casualty Messages p.a.
 - Lloyd's Global Agency Network
 - Coastguards
 - Salvage Agents
 - Media Reports

Trends

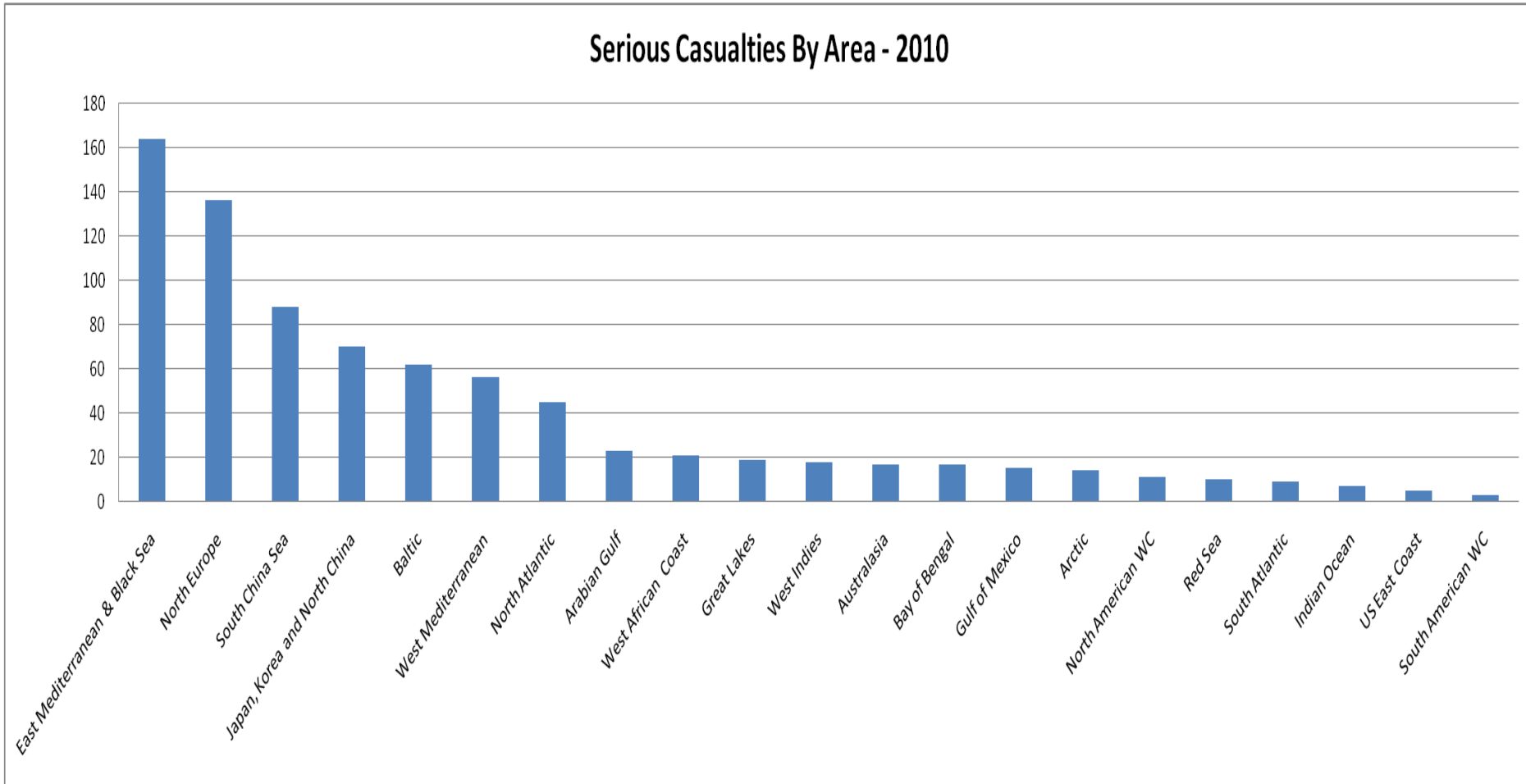


Total Losses

Total Losses by Vessel Type - 2006 - 2010



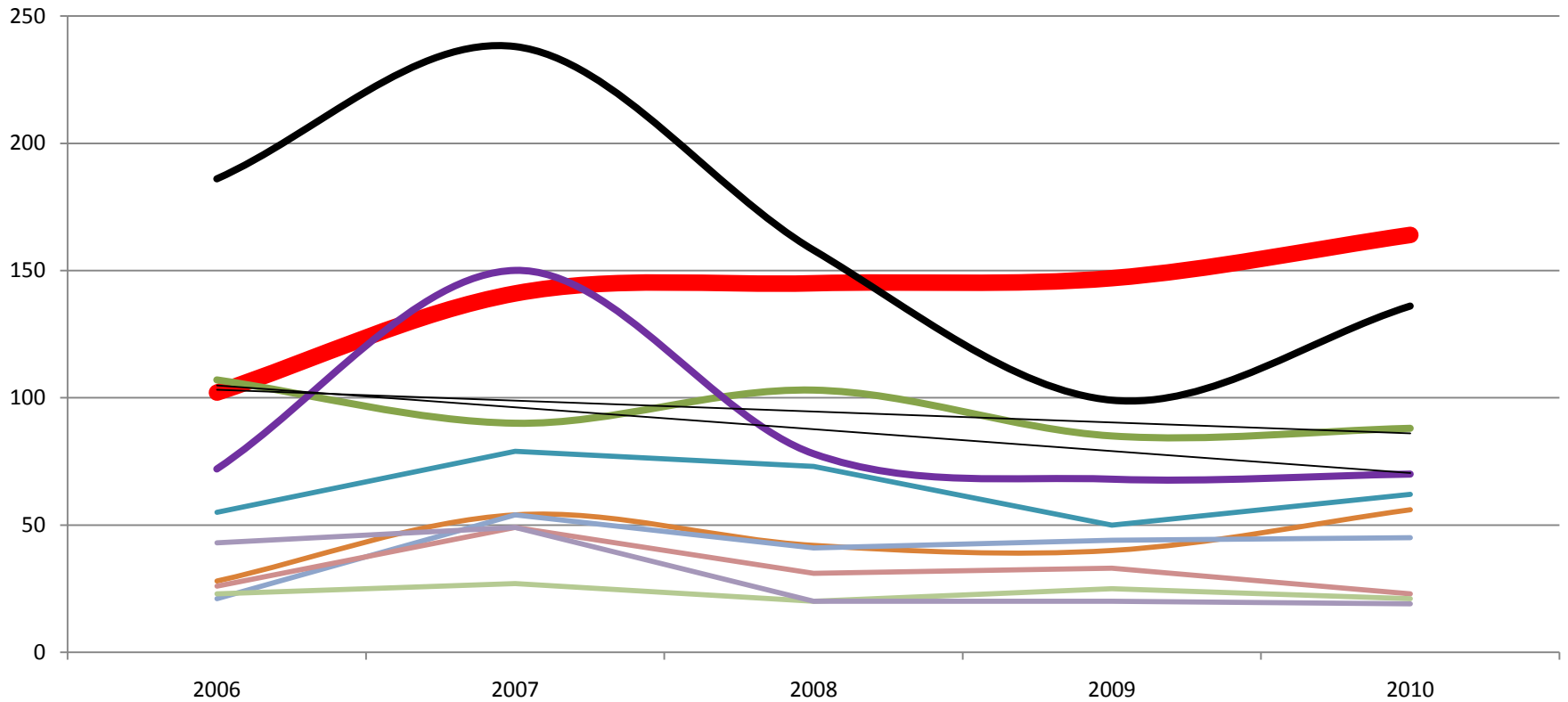
Serious Casualties by Area



Eastern Med/Black Sea - Casualty Hot Spot ?

- Relative and Absolute increase in number of serious casualties
- Overtaken North Europe and Asia despite lower level of shipping activity
- Fleet Profile:
 - Elderly age profile Avg. 20+ Years compared to 12 for vessels operating in Europe and Asia
 - Relatively high % of dubious flag registries (Cambodia, Togo, Comoros, North Korea)
- Lax regulatory controls - magnet for substandard ships/owners?

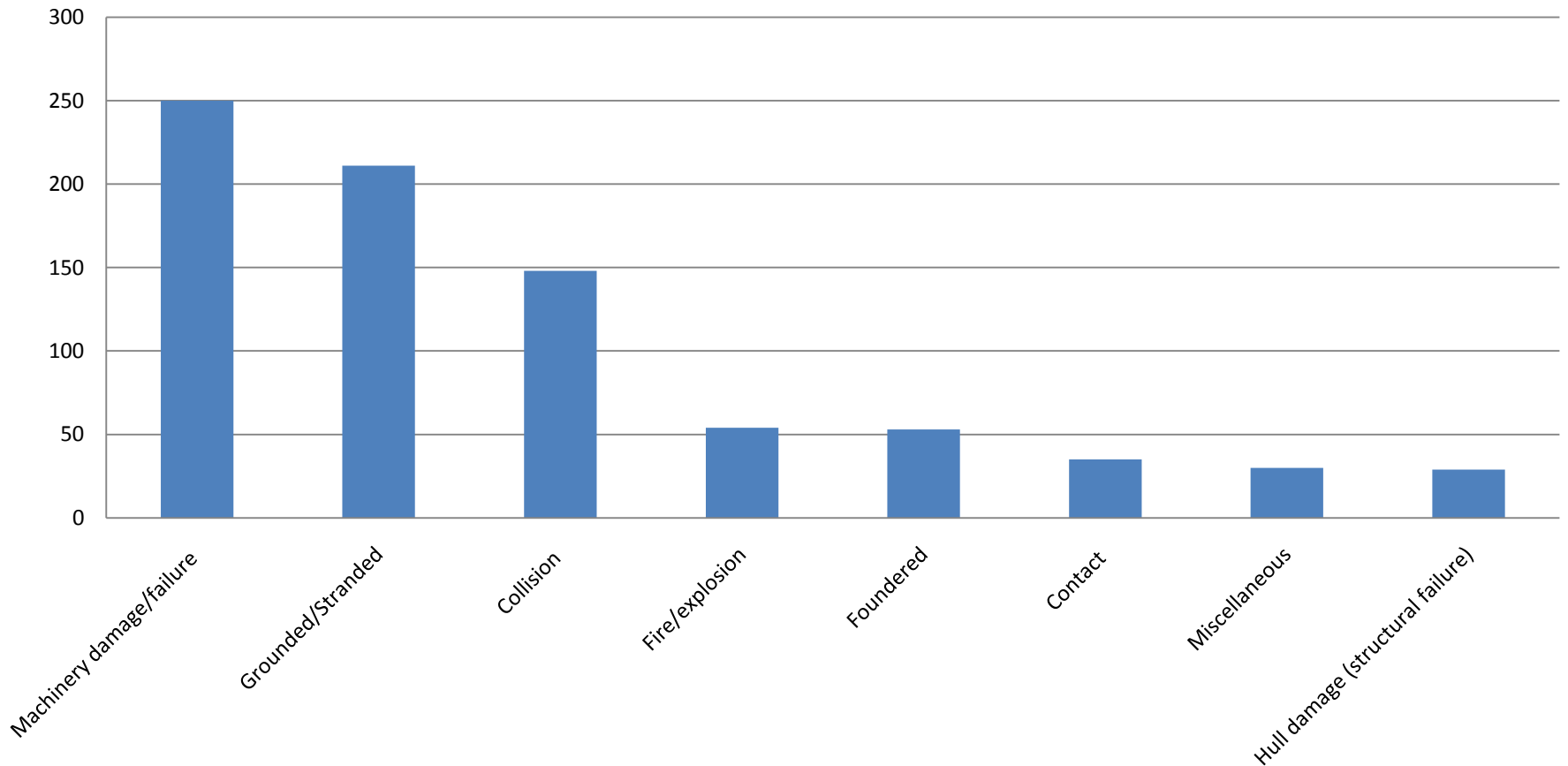
Serious Casualties by Area



- █ East Mediterranean & Black Sea
- █ North Europe
- █ South China Sea
- █ Japan, Korea and North China
- █ Baltic
- █ West Mediterranean
- █ North Atlantic
- █ Arabian Gulf
- █ West African Coast
- █ Great Lakes
- Linear (South China Sea)
- Linear (Japan, Korea and North China)

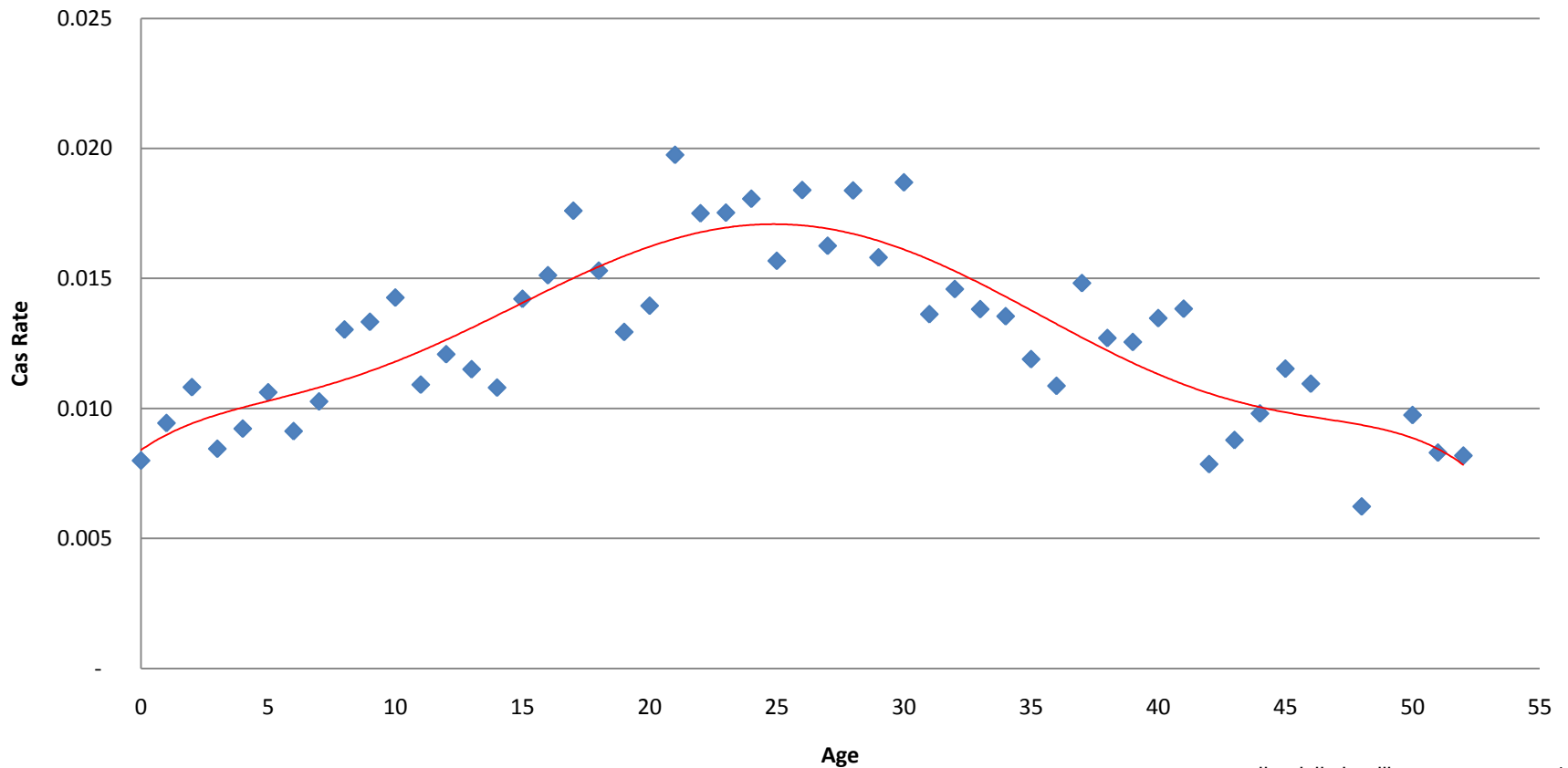
Serious Casualties - Primary Cause

Serious Casualty by Primary Cause - 2010



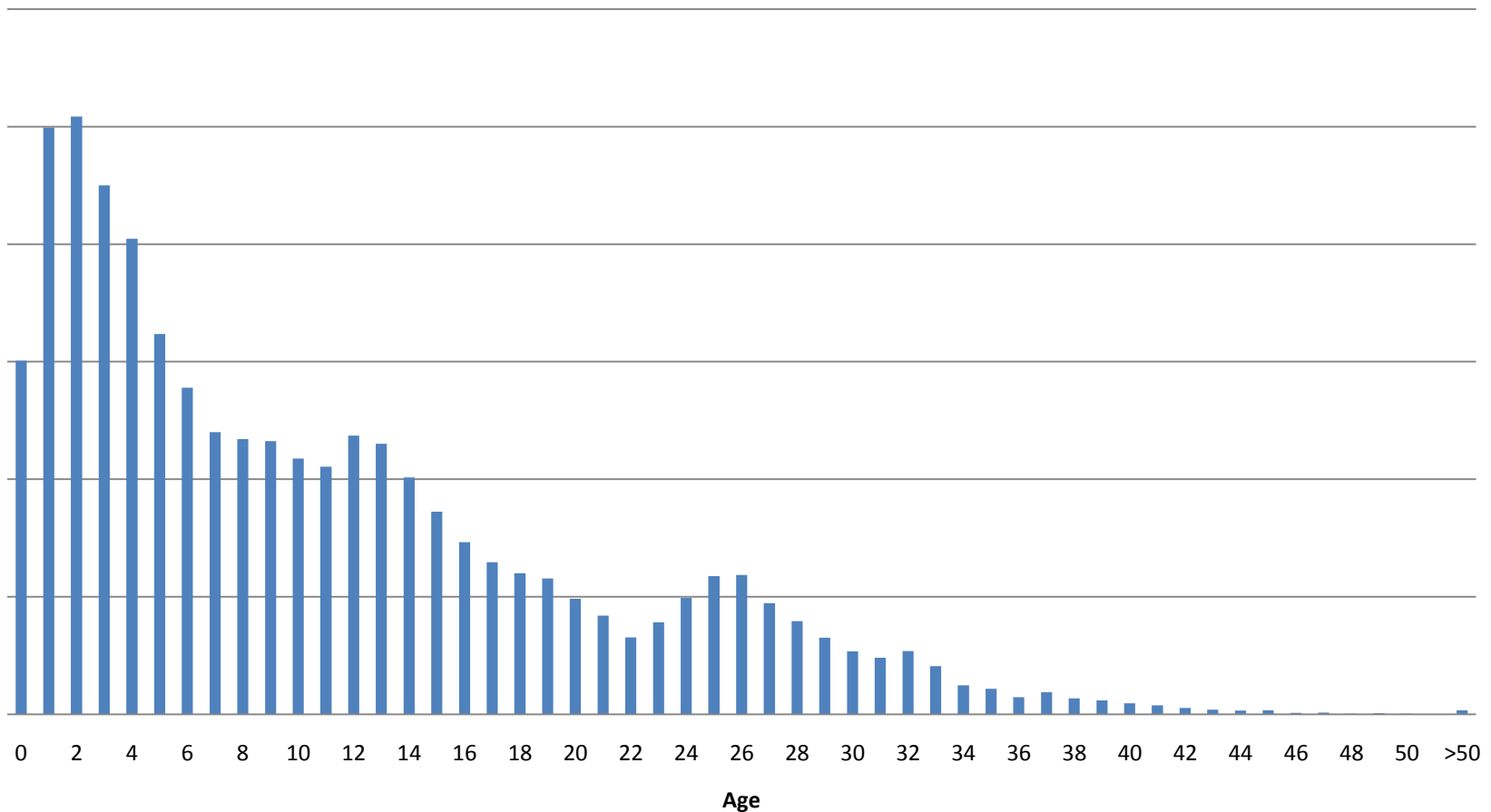
Serious Casualties Age Profile

Serious Casualty Incidence Rate 2006 - 2010 By Age - Total Fleet



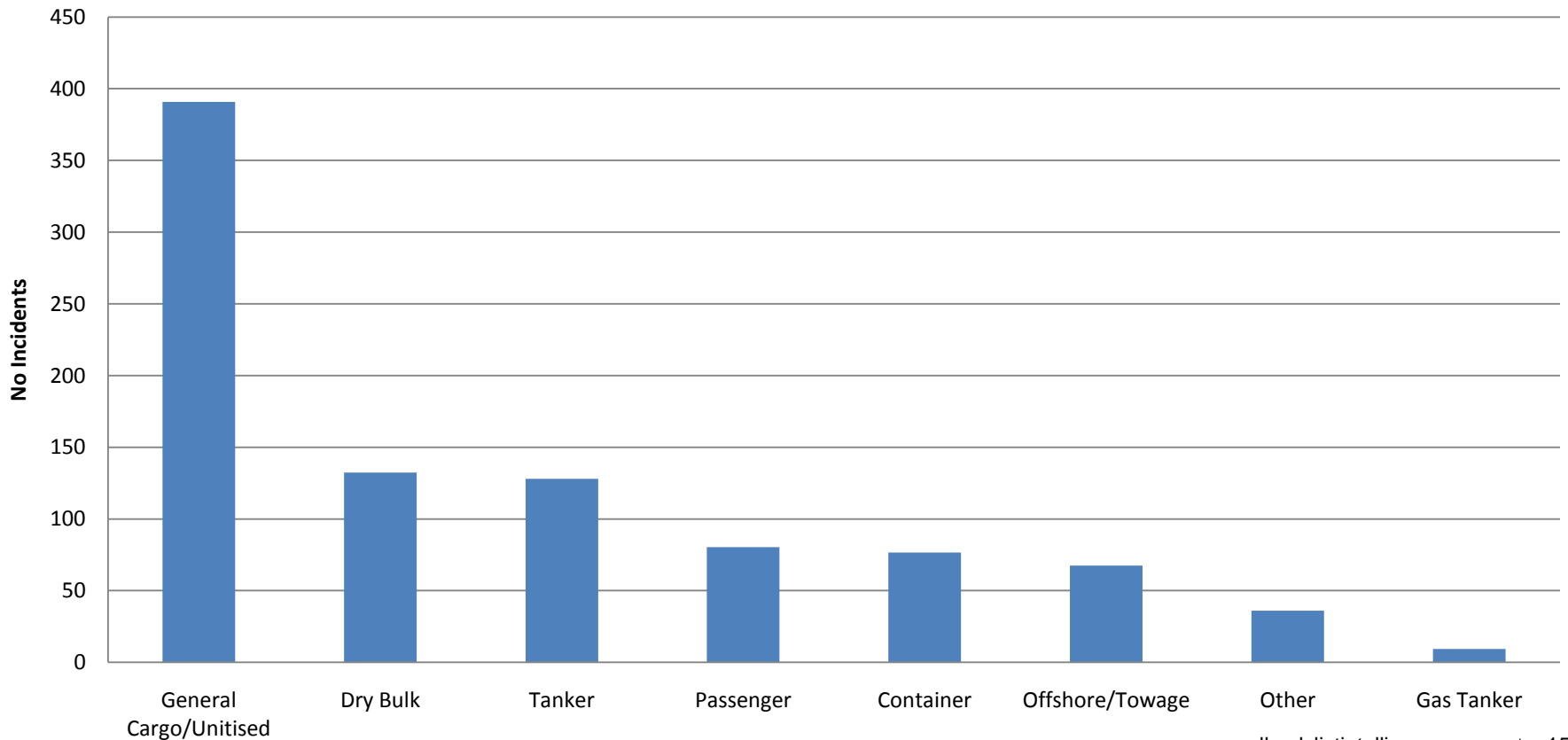
Ship Activity by Age

Ship Miles by Age - 2010



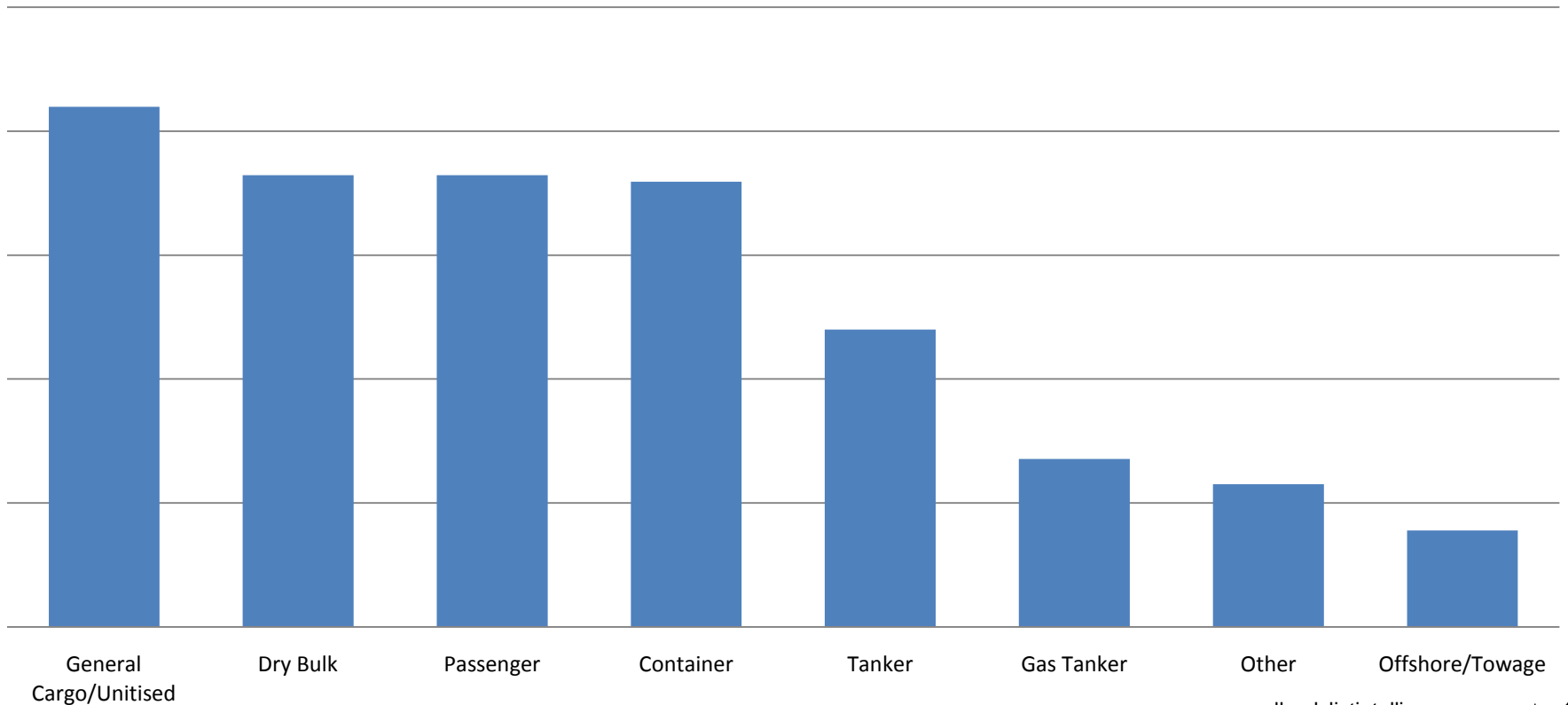
Vessel Type Profile – Number of Incidents

Serious Casualties By Vessel Type - 5 Year Average



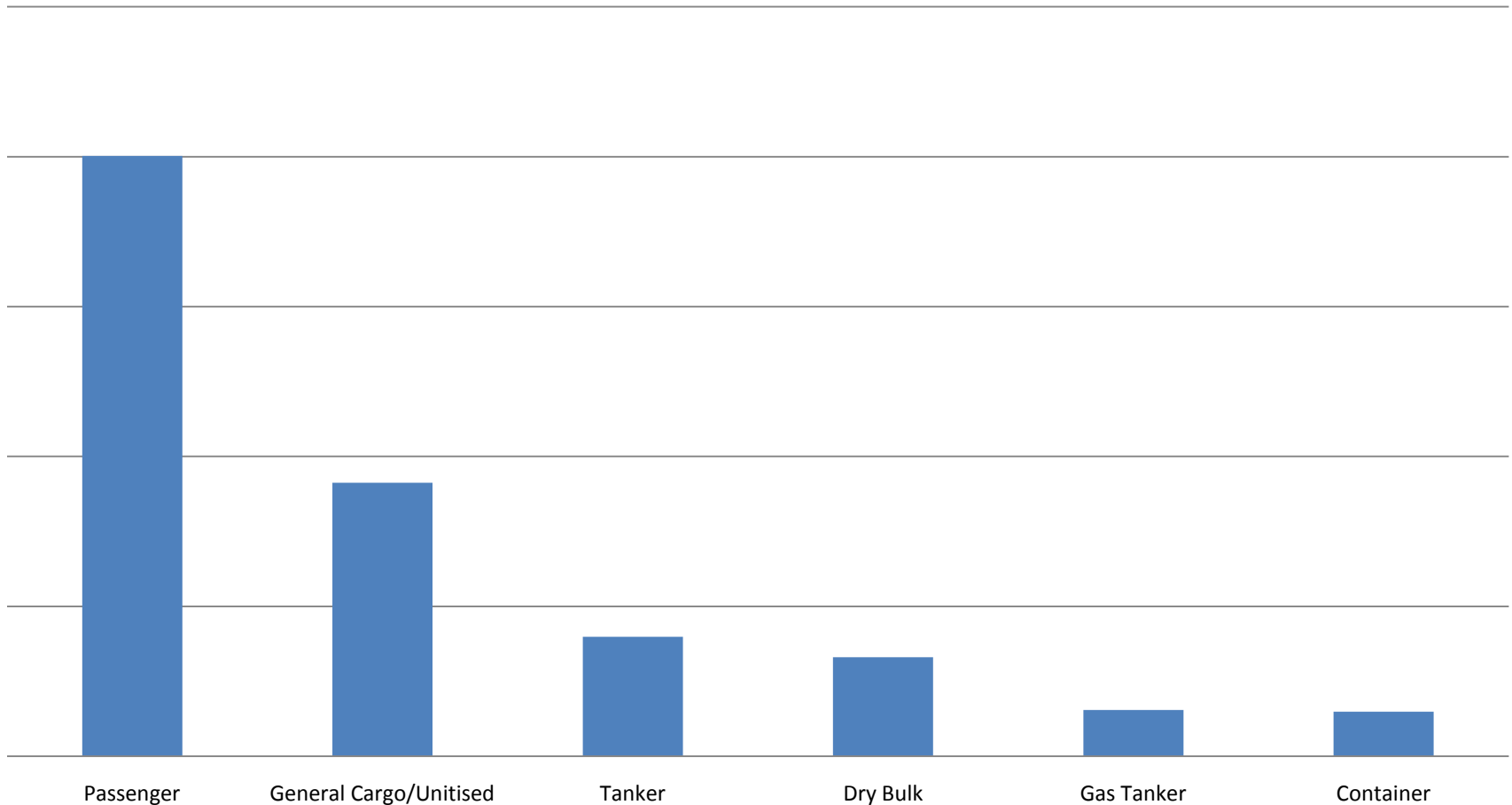
Vessel Type Profile – Relative to Fleet Size

Serious Casualties By Vessel Type Relative to Size of Fleet- 5 Year Average



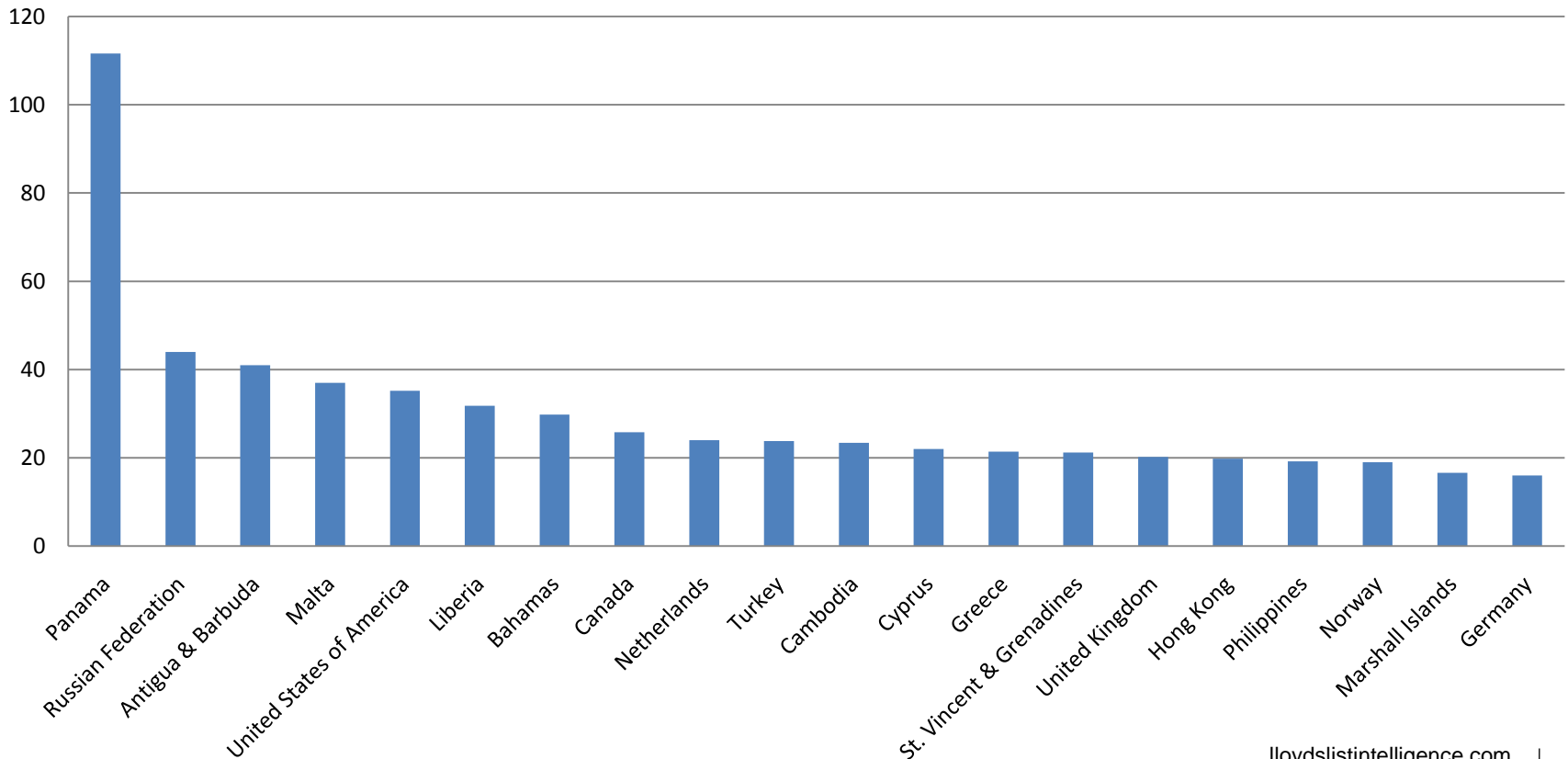
Vessel Type Profile – Relative to Ship Activity

Serious Casualties By Ship Type and Ship Miles 2010



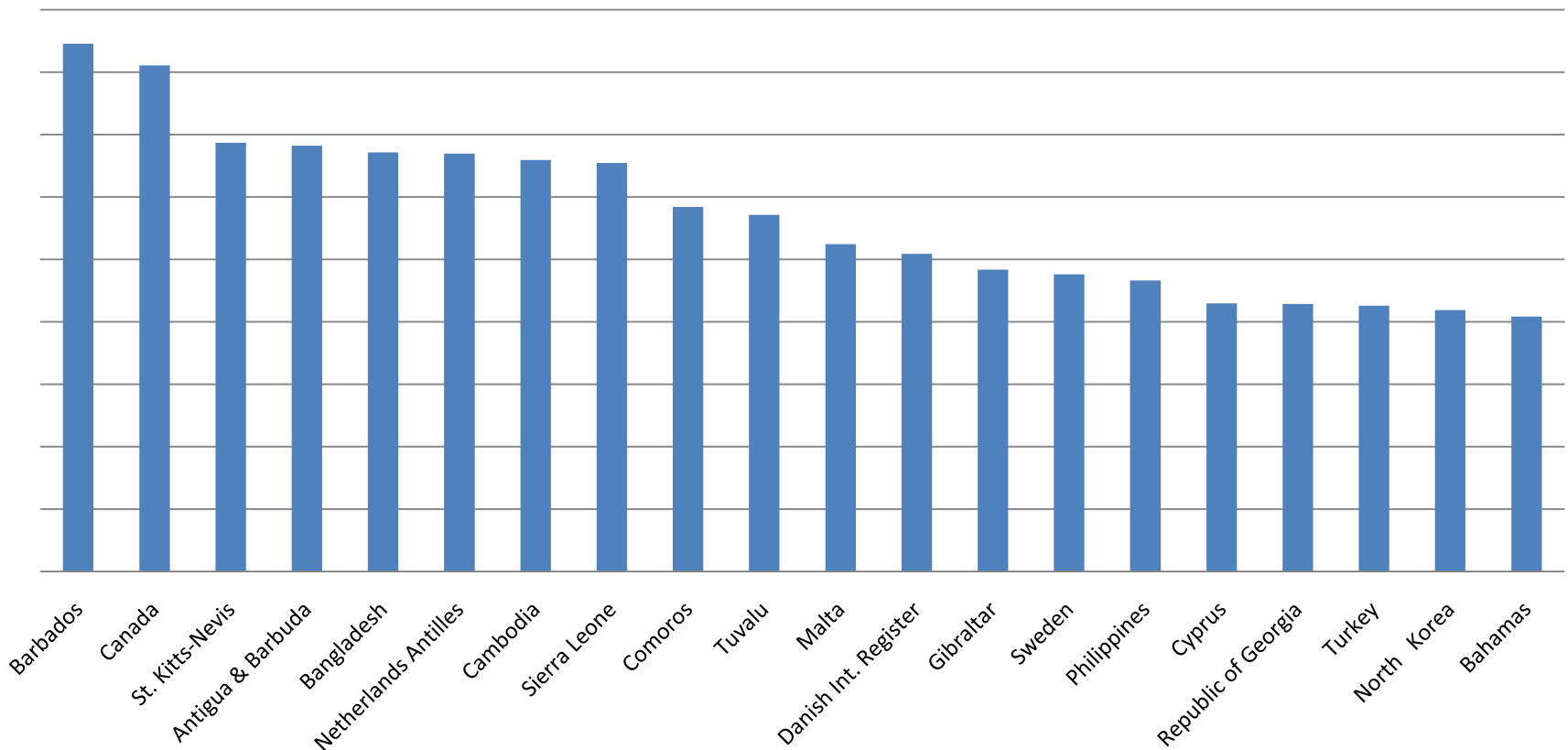
Flag Profile – Number of Incidents

**Serious Casualties By Flag - 5 Year Average
Top 20**



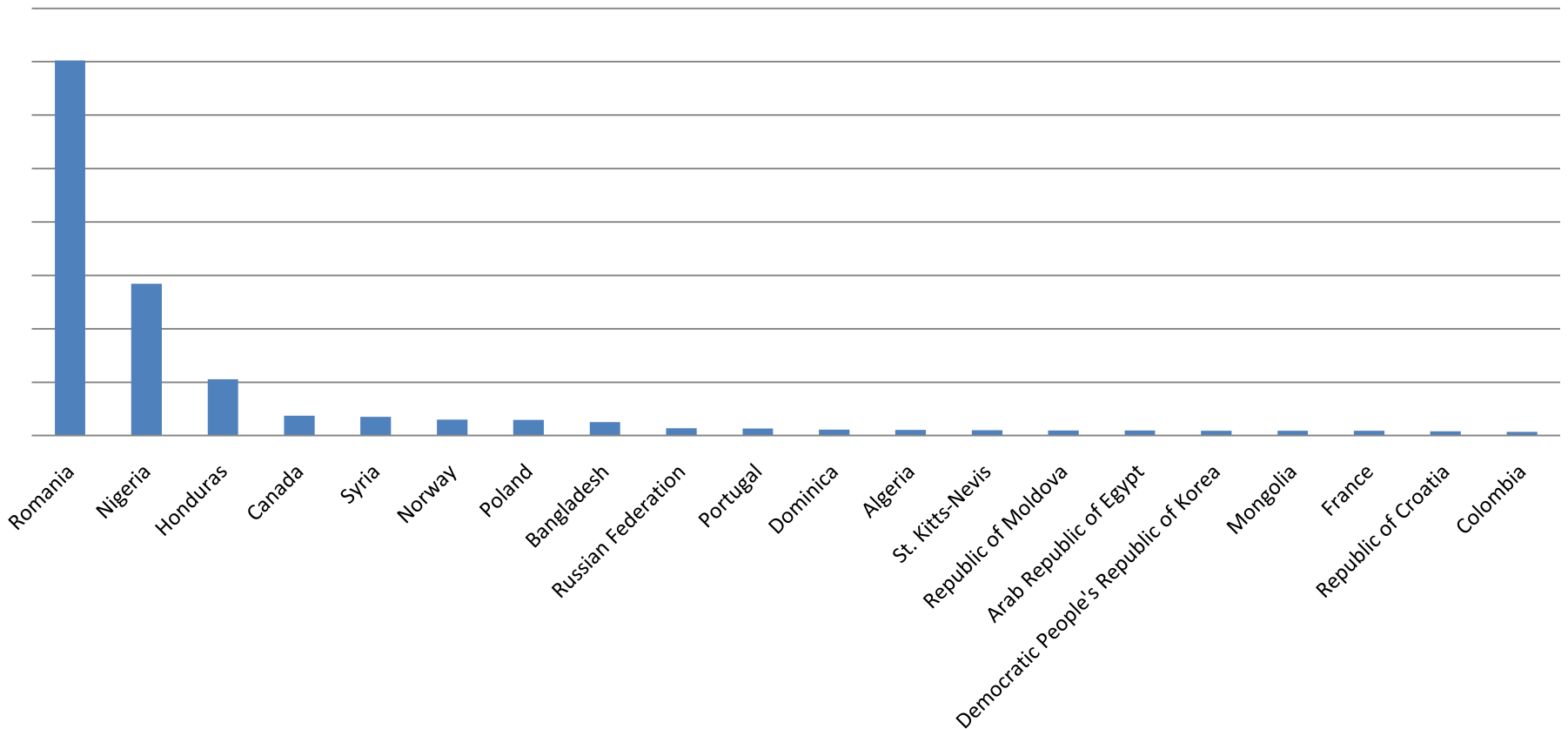
Flag Profile Relative to Fleet Size

**Serious Casualties By Flag Relative to Size of Fleet- 5 Year Average
(Fleets > 100 Vessels)**



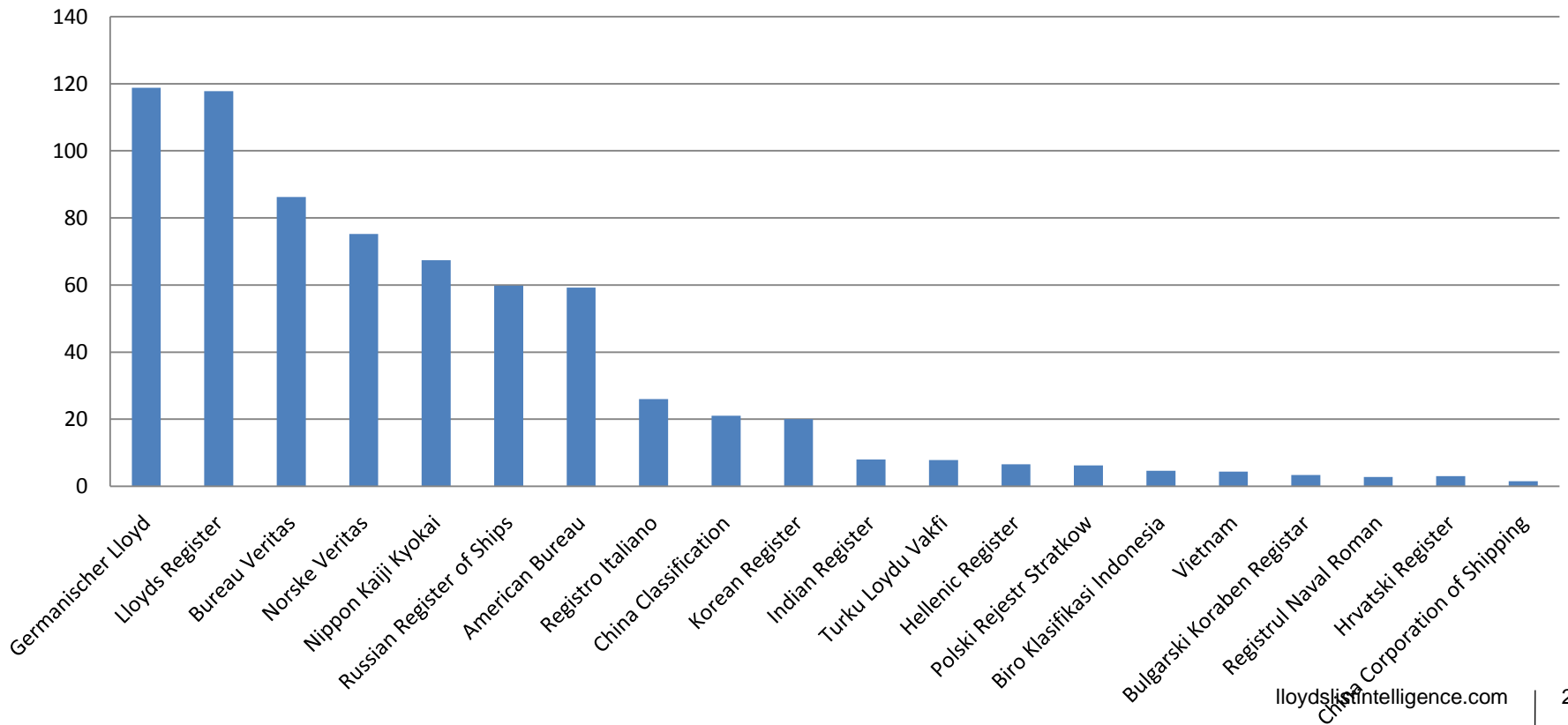
Flag Profile - Relative to Ship Activity

Serious Casualties By Flag and Ship Miles 2010



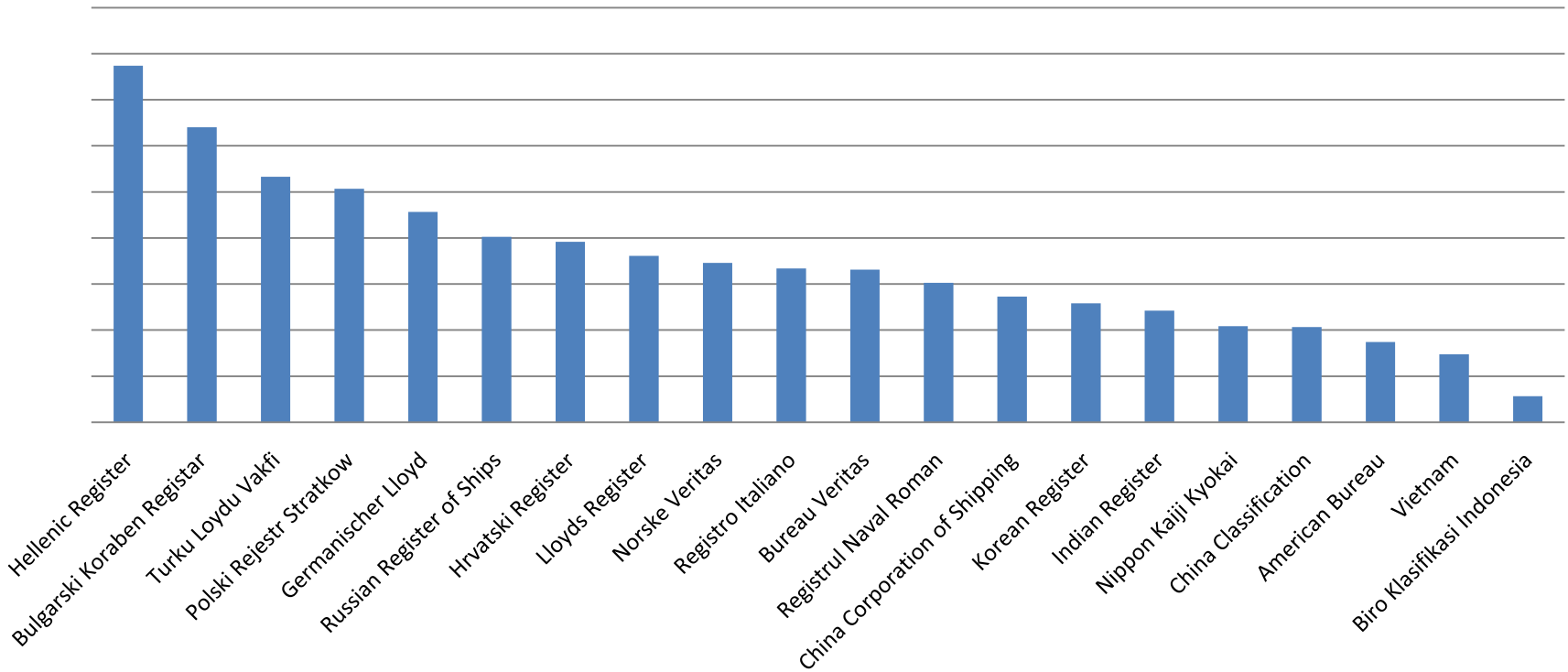
Class Profile - Number of Incidents

Serious Casualties By Class- 5 Year Average



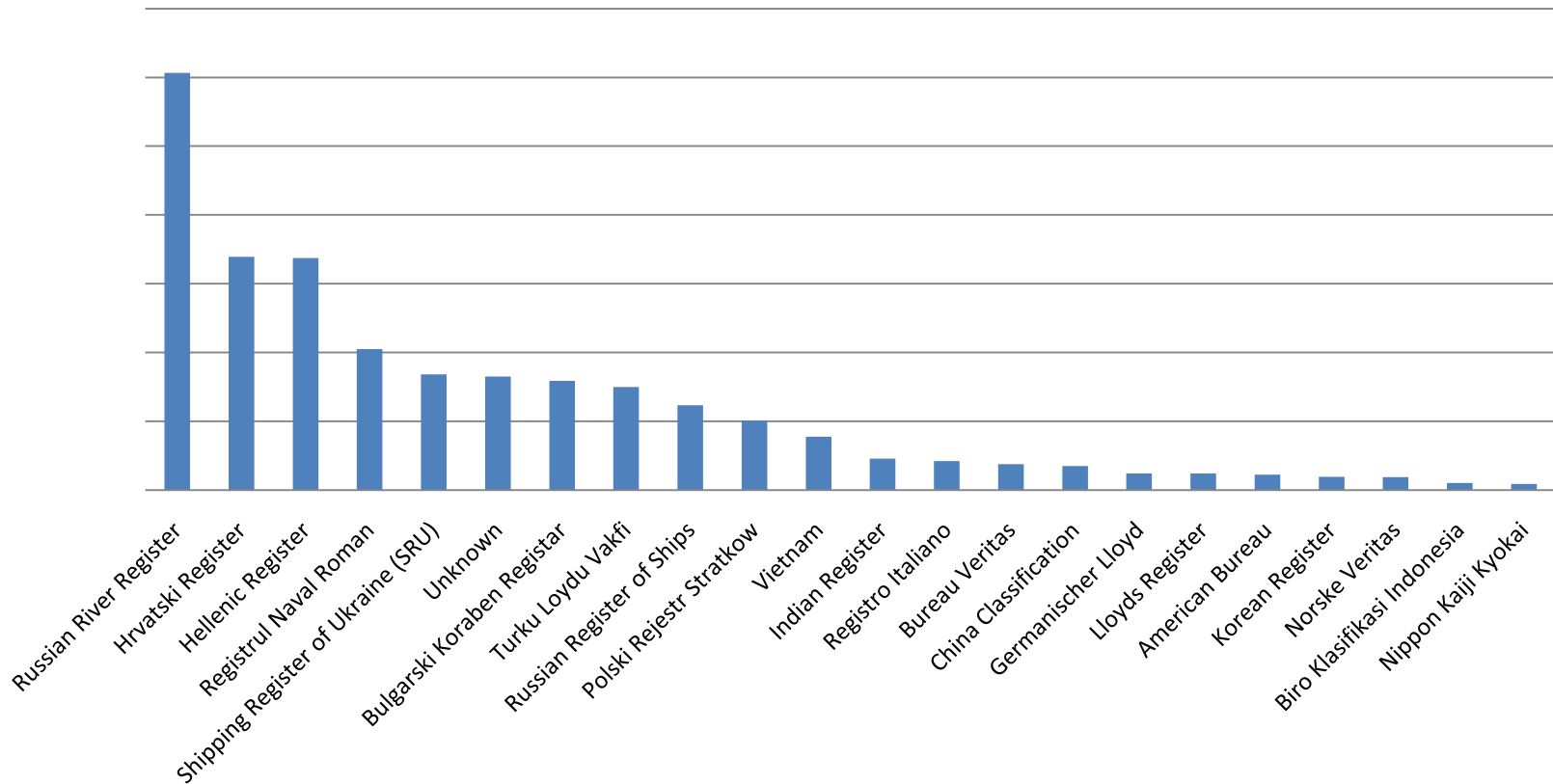
Class Profile- Relative to Fleet Size

**Serious Casualties by Class Relative to Size of Fleet- 5 Year Average
(Fleets > 100 Vessels)**



Class Profile - Relative to Ship Activity

Serious Casualties by Class and Ship Miles 2010



Lloyd's List Group

Telephone House, 69-77 Paul Street,
London, EC2A 4LQ.

+44 (0)20 7017 4482

lloydslistintelligence.com