

# Profile of European Port Traffic

**International Maritime Statistics Forum**

Copenhagen 19-21 May 2014

**Wally Mandryk Lloyd's List Intelligence**

## Outline

- Lloyd's List Intelligence
- Sources and Methods
- Scope of Data Coverage
- EU+ Port Traffic – Key Figures and Trends:
  - Traffic levels
  - Vessel and Shipowner Profiles
  - Port Connectivity
  - Global Comparators

## Lloyd's List Intelligence Timeline

- Edward Lloyd's Coffee House 1691
- Lloyd's List 1734
- Lloyd's of London – Intelligence Department 1803
- Lloyd's of London Press 1973
- LLP Press 1995
- Informa 1998
  - *Lloyd's MIU*
  - *Lloyd's List Intelligence*

Continued exclusive arrangements with Lloyd's to manage the data gathering activities of Lloyd's Global Agency Network

SHIPS Arrived at, and Departed from several Ports of England, as I have Account of them in London; from December 5. to December 22. 1696. [Numb. 257.]

Falmouth		At Deal	
Decem. 13. Arriv'd, Spanish Expedition with one Mail, from Corunna		Decem. 16. Cattle-Frigate	Tant
15. Sail'd, Daniel of Plymouth, William Arbwell, for Cadiz		Diamond-Gally	London
Mary de Grave of Plymouth, Thomas Harris, for Canary		Success	Long
16. Arriv'd, Van Don of R for F ulking, M. Speake, from Guiny		Love	Well
Goden Hope of Danzick, Jacob Miron, for St. Ubes		Lucy	Deane
17. John of Plymouth, John Ford, from St. Maloe, with		Constant John	Dort
Prisoners		Elizabeth & Catherine	Waid
		Refolution	Gof on
		Sarah & Susan	Starvey
		Abigail	Maynard
		Anne	Pine
		Edw	Wood
		Providence	Ucceler
		Robert & Nuzanael	Smith
		Amny	Heath, for East-Ind
			Arriv'd at Gravesend.
		15. Friend's Increase, Roger Golden	from Riga
		Providence, William Carling	from Narve
		Joseph Jewell	from Narve
		Providence, Christoph	W. after
		Christian Margaret, Henry Griver,	from North Bergen
		Prophet Daniel, John Mulla,	from Hambro
		Brie-Garland, Aaron Ager,	from Stockholm
		Friend's Adventure, George Philpot	from Riga
		Friendship, John Letter	from Riga
		Relc, James Williamson	from Scotland
		George, John Hago	from Riga
		20. Lark, Andrew Hawken,	from Lisbon
		John & Thomas, Thomas Reynolds,	from Narve
		Dundee-Frigate, Patrick Fretton,	from Scotland
		Sea-Adventure, William Godley	from Riga
		Pavlen, William Paffen	from Riga
		Elizabeth, Henry Willo	from Narve
		E. Isaac, Michael Harter,	from Qu cenbo
		North Star, William Henderson,	from Hambro
		Sail'd from Gravesend.	
		17. Herne, Henry Baker,	for Legon
		Adventure, Robert Bateman,	for Canary
		St. Michael, Suedes Govera Coyvo,	from St. Sebastian
		Boon-Yard, Paul Nelson,	for Sound
		Post-Horle Christian Prilman	for France
		Riga-Merchant, Harman Move	

Wind at Three in the Afternoon.

London.		Deal	
December 15. --North-East	December 19. --North-West	December 15. East-North-E	December 19. --North
16. --North-West	20. --North-East	16. --West	20. East North-E
17. --North-West	21. --North-East	17. --North-West	21. --
18. --North-West		18. --North-West	

An Account of what English Shipping and Foreign Ships for England, I hear of in Foreign Ports.

Ships in the Bay of Cadix.		Sail'd out of the Bay of Cadix.	
Novem. 12. Thomaz & Sanuch, Leonard Bowers	for London	Novem. 18. Macclefield-Gally	Hurle, for Legon
Conicut, William Clipperton		Prince George	Skinner, for Alicant
Elizabeth, Anthony Thospe			At Corunna.
Tree-Hawk, Edward With		Decem. 12. Arriv'd, Spanish Expedition, with a M. il, from Falmouth	
Elizabeth, Francis Humble		1. William & John, John Wirt	from Newfoundland
Elizabeth, Thomas Loder		Bonadventure, John Corban	
Thomas, Randal Pyc		Isabella, John Jours	
Barnett-Merchant, Richard Wilkey	uncertain whither bound	Harc, John Robbins	
Mary-Brigantine, George Coxhill		William Ryner	Operta.
Coronation, Henry Boter		Middleton of Leverpool, from Newfoundland	
Experiment	Hacker	Lidon.	
Nightingall		William & Daniel, William Eilhop	from Newfoundland
Vais, Henry Swinbourne		Porragal Merchant, Thomas Sax	
Lamb, Philip France		Gillingham, Colbar Walker	
Zant, John Hooper		Mary, John Lampry	
St. John, John Champion, for Ireland		Shrewsbury-Gally, John Davison	from Ireland
Lamb-Gally, Matthew Lovell	for Alicant	Frog-Dogger, John Sent	
Provincial, Thomas Barly	London	At Malaga.	
Rooke-Frigate, Edward Swaine	for Legon	23. A Flushing	for Amsterdian
Tuicany-Gally, George Batly		A Legomcefe	
Jesus Maria & Joseph, Tho. de Vardnoia	for Venicians, for	Gay of Malaga, for Rotterdam	
Jesus Maria & Joseph, Simon de Clairain	London	Prince Charles a Suede, for Hambro	
Arriv'd in the Bay of Cadix.		Sarah	Sure, for Bristol
14. Macclefield-Gally	Hurle	Elizabeth & Catherine	Thorpe
Prince George	Skinner	Malaga-Sloop	Bearfoot
15. Cole & Beane-Gally, J. Hammell		Conception	Monk
18. Richardson-Gally	Rider, from St. a Cruise	Arriv'd at Legon.	
Sail'd out of the Bay of Cadix.		Macklesfield-Gally	Hurle, Rooke-Gally
Cole & Beane-Gally	Hammell	Tuican-Gally	Baily
Rooke-Frigate, Edward Swaine	for Legon	The Ships & Convoys from Simran, arriv'd at Medina Nov. 21.	

The Jeffries, William Cooper Commander, 450 Tons, 30 Guns, bound for Virginia, will depart with the Canary-Convoy.

LONDON: Printed for Edward Lloyd (Coffee-Man) in Lombard-Street.

# Lloyd's List Intelligence

Shipping just got smarter

Contains this phrase  Exact phrase  Advanced  Helpdesk

+44 (0) 20 3377 3996

- Home Tankers LNG Dry Bulk Containers Insurance Law & Regulation Credit Lloyd's List News
- Seasearcher Casualties Sanctions Credit Reports AIS My Account

Home Places Movements

London

Country: U.K. AIS: [Launch AIS](#)

Type: Port

Area: UK/Eire

[Query this data?](#)

Place	
Overview	Facilities
Movements	ISPS
Sightings	Detentions
Fixtures	Vigilance
Accommodation	News

Place Movements - Currently At Place

Vessels currently at this place showing name, IMO, flag, type, contact, tonnages when arrived, and previous place

Vessel	IMO	Flag	Type	Contact	GT	DWT	Arrived	Place	Arrived	Sailed	Previous Location
Victorine	9184029		Roll On Roll	HSBC Belgium	2397	9729	03 Mar 2014	Rotterdam	01 Mar 2014	02 Mar 2014	
Mazarine	9376696		Roll On Roll	COBELFRET G.	25593	14552	03 Mar 2014	Zeebrugge	01 Mar 2014	02 Mar 2014	
Seabass	9251640		Combined	German T.	21353	32445	03 Mar 2014	Skaw	26 Feb 2014	26 Feb 2014	
Arctica Hav	8403571		General	Hav Bulk A/S	1532	1890	02 Mar 2014	London	01 Mar 2014	01 Mar 2014	
Stratview	9391127		Chemical Tanker	Cowen M.	2222	3550	02 Mar 2014	Goole	01 Mar 2014	01 Mar 2014	
Catharine	9209453		Roll On Roll	COBELFRET G.	21287	13320	02 Mar 2014		01 Mar 2014	02 Mar 2014	

## What Information is Collected?



## Scope of Data Coverage

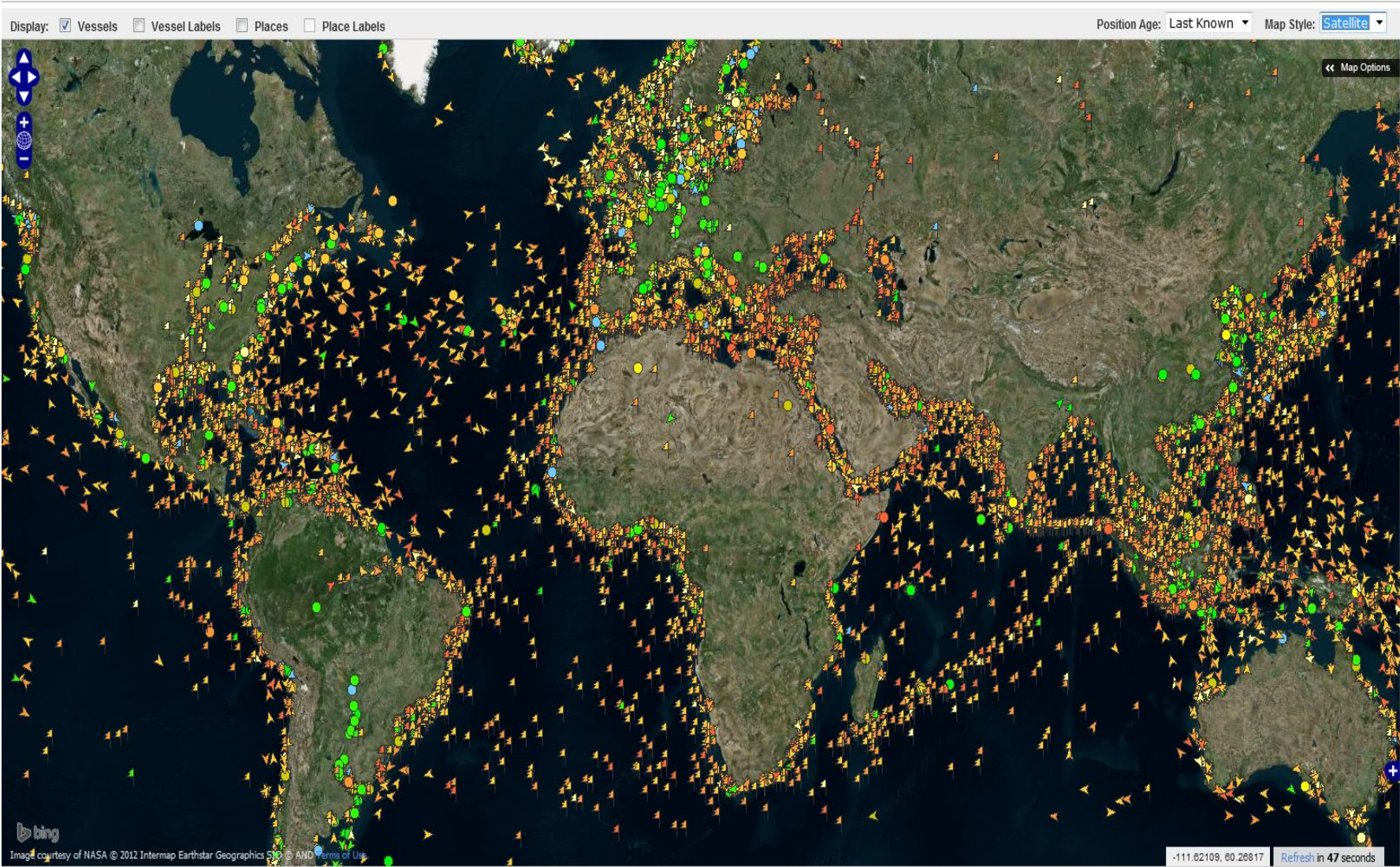
- **LLI Fleet Information** - Merchant Vessels > 99 gt
  - 180,000 Vessels/200 Data Fields
  - 163,000 Ownership Relationships
- **Ship Deployment**
  - 5.5+ million reported port Arrivals/Departures
    - 180,000 unique port to port routes
    - Live coverage of 6,900+ ports, terminals in 132 countries
    - 65 million AIS positions reported daily from 72,000 unique vessels

## Information Sources

- 700 Lloyd's Agents and Sub-Agents
- 1000+ locations covered by land-based AIS receivers
- Satellite AIS reports from Orbcomm
- Classification Societies (IACS and non-IACS members)
- Flag Registries
- P&I Clubs
- Ship Owners
- Port Authorities
- Ship Brokers
- Insurers
- Coastguards and search and rescue centres
- Government and pan-government suppliers

# Lloyd's List Intelligence

Shipping just got smarter





Home > Vessels > Overview

 **Emma Maersk**


[Location](#) [Return to Search](#)

**IMO:** 9321483      **Type:** Fully Cellular Containership  
**Flag:** Denmark (Int. Register)      **Status:** Live  
**Reg. Owner:** A.P. Moller-Maersk A/S


[Query this data?](#)      [Set up vessel alert or add a note](#)      [Vessel Report](#)

Vessel	
Overview	Ownership
Movements	Hull Risk
AIS Sightings	Vigilance
Fixtures	Sanctions
Incidents	News
Notes	Reports

**Vessel Overview**  
Details of the vessel including registration, dimensions, ownership and other characteristics... updated 24/7

▶ <b>Name</b>	Emma Maersk	▶ <b>IMO</b>	9321483	▶ <b>Status</b>	Live
▶ <b>Flag</b>	 Denmark (Int. Register)	▶ <b>Type</b>	Fully Cellular Containership	▶ <b>Year of build</b>	2006
▶ <b>DWT</b>	156907	▶ <b>GT</b>	170794	▶ <b>Contact</b>	A.P. Moller-Maersk A/S
▶ <b>Hull Type</b>	Single	▶ <b>Teu Capacity</b>	15550		

[Expand All](#) [Collapse All](#)

- Available Images**
- 
- [Registration \(Name, Flag, Callsign, IMO, MMSI\)](#)
  - [Tonnages \(GT, Net DWT\)](#)
  - [History \(Construction Details, Launch Details\)](#)
  - [Dimensions \(Breadth, Depth / Draught, Length\)](#)
  - [Classification & Insurance \(Clubs, Societies\)](#)
  - [Hull details \(Hull Info, Ballast\)](#)
  - [Facilities details \(Details on available facilities\)](#)
  - [Machinery \(Engines, Speed, Propellers, Boilers, Generators\)](#)
  - [Inmarsat \(Mobile numbers\)](#)
  - [Research Data \(Weather reports relating to vessel history\)](#)

Historical Ship Movements, Ownership, Technical and Casualty Details available electronically from 1976

## Port Calls 2013

Region	No. Vessels	%	Fleet Size (DWT)	%	DWT Capacity	%	No. Calls	%
ROW	37,072	96%	1,603,633,254	99%	44,590,392,592	85%	1,452,731	75%
EU+*	15,449	40%	617,300,724	38%	7,679,020,503	15%	480,432	25%
Total	38,710	100%	1,615,076,611	100%	52,269,413,095	100%	1,933,163	100%

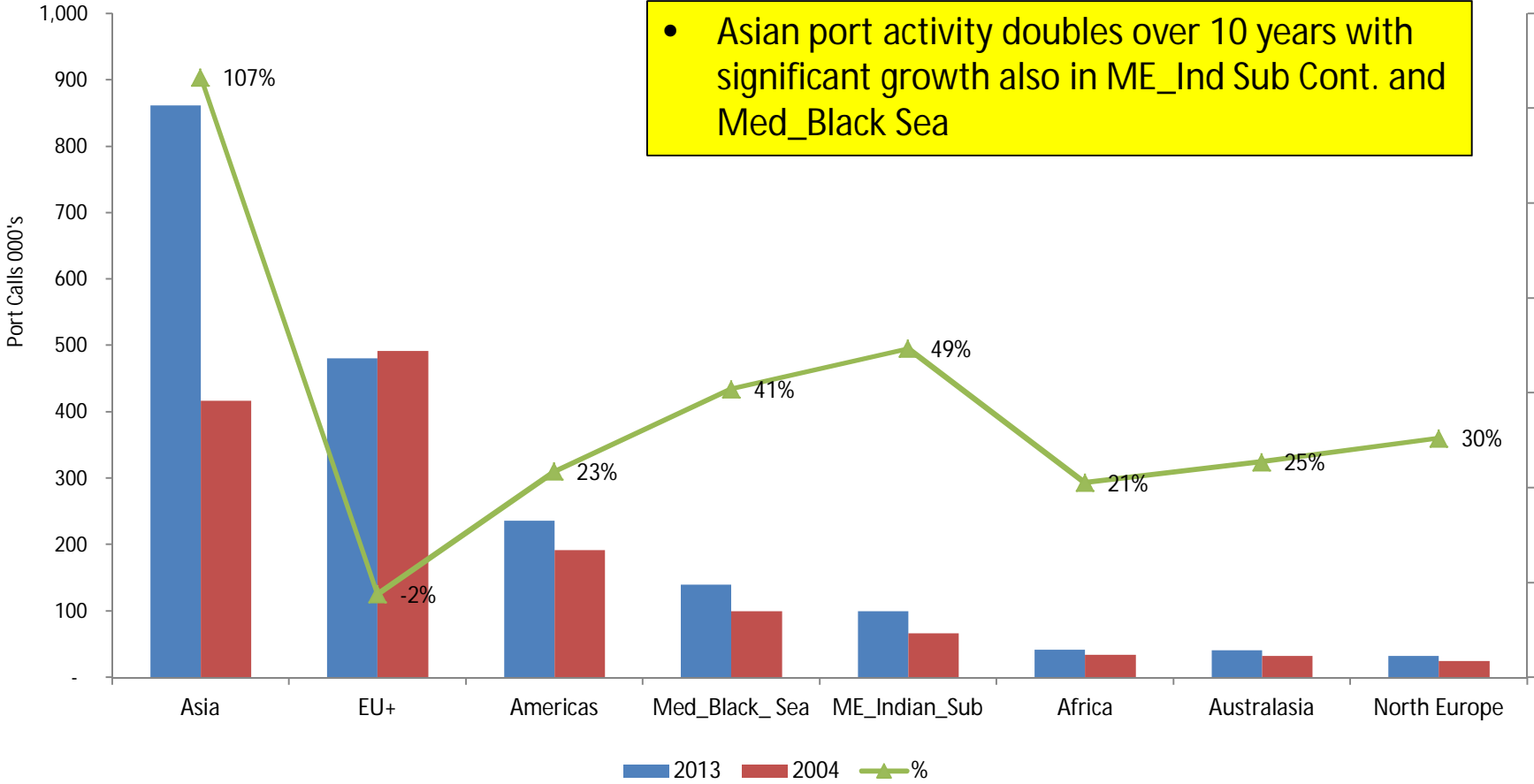
\*EU + Norway

## Port Calls 2004

Region	No. Vessels	%	Fleet Size (DWT)	%	DWT Capacity	%	No. Calls	%
ROW	26,784	94%	851,504,190	99%	23,032,162,738	79%	866,533	64%
EU+*	14,766	52%	459,165,614	53%	6,265,136,338	21%	492,295	36%
Total	28,529	100%	862,525,808	100%	29,297,299,076	100%	1,358,828	100%

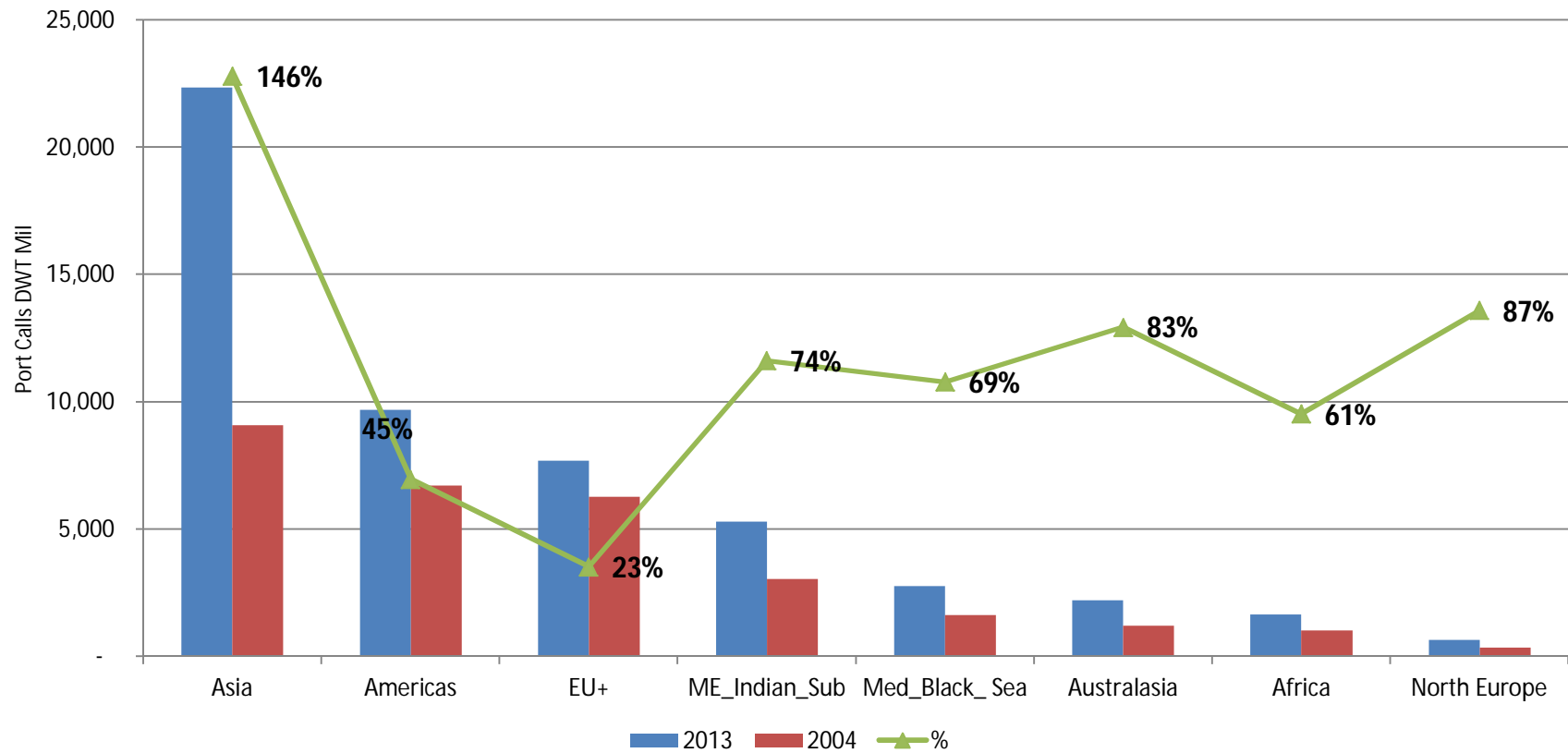
\*EU + Norway

## Port Calls By Region No. Calls



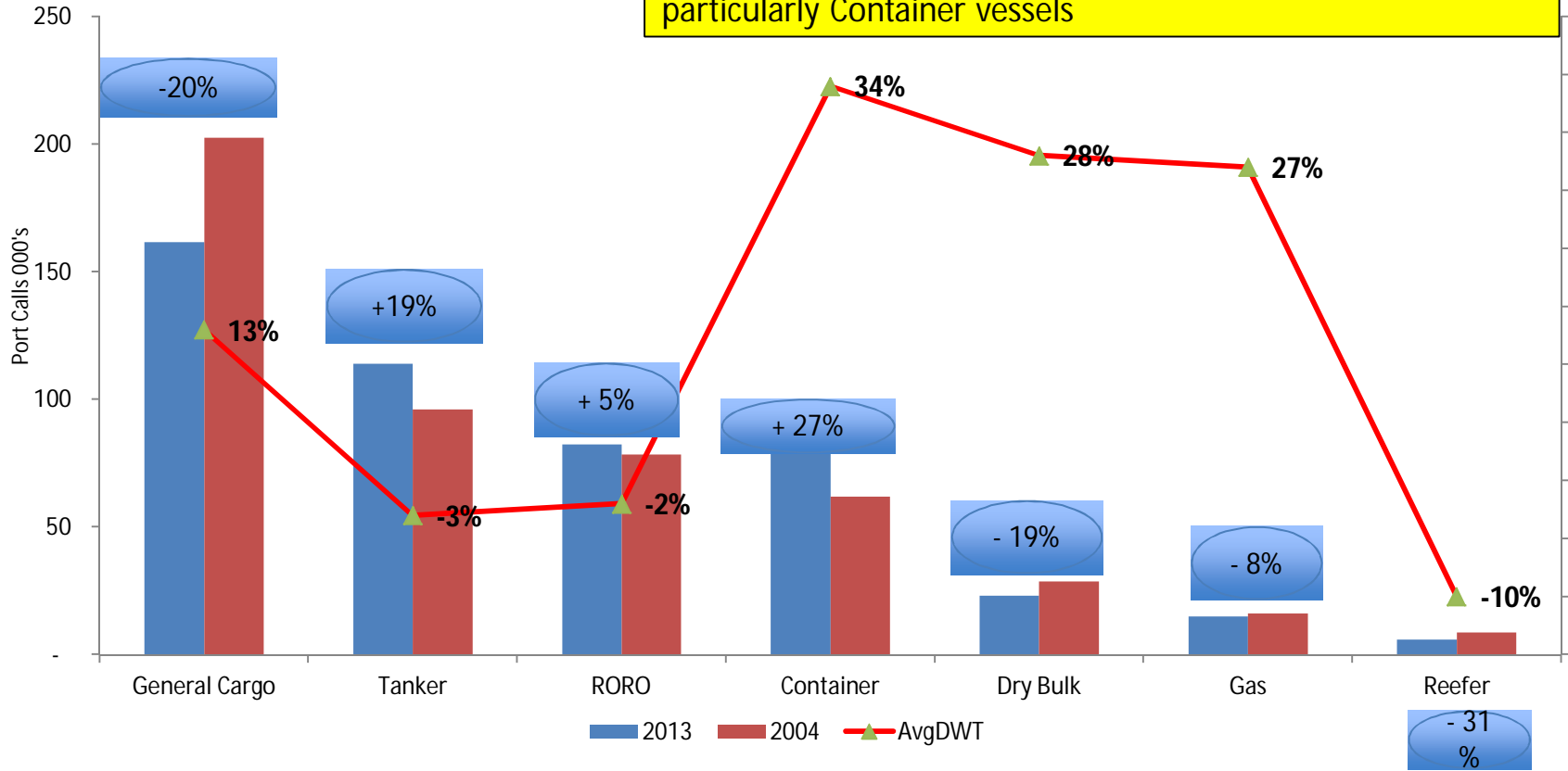
## Port Calls By Region DWT Capacity

EU+ capacity growth under-performing ROW

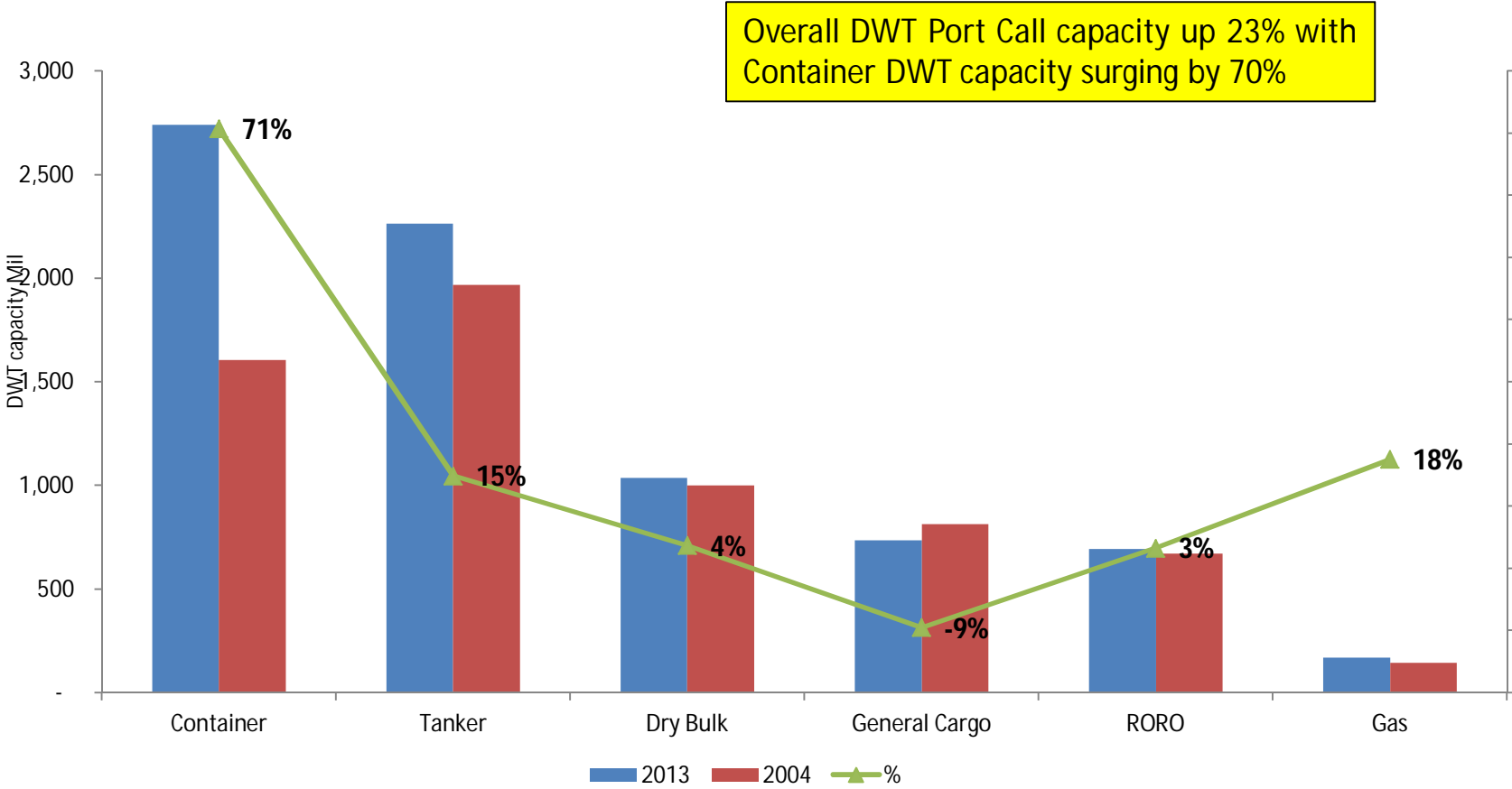


## Port Calls EU+ By Vessel Type - No. Calls

Marginal decline in overall EU+ port activity driven by drop in small size high frequency General Cargo calls offset by increases in average size and frequency in other categories - particularly Container vessels



## Port Calls EU+ By Vessel Type – DWT Capacity



## Fleet Age Profile

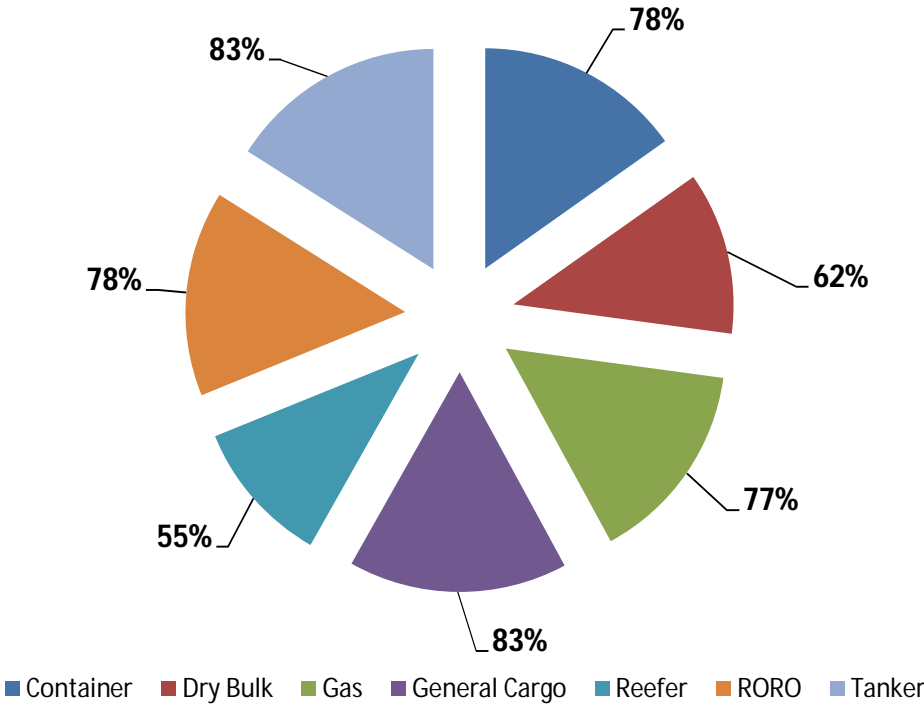
Vessel Type	EU+ 2013	EU+2004	ROW 2013
Container	9.4	9.11	10.23
Dry Bulk	8.7	14.42	9.90
Gas	11.3	14.02	12.38
General Cargo	18.2	20.78	18.74
Reefer	20.7	17.49	23.50
RORO	15.9	17.01	17.04
Tanker	9.5	12.89	11.51

Younger age profile of fleet calling at EU+ Ports



## Vessel Owner Profile

- **80 % of Vessels Calling at EU+ Ports Owned by Entities Domiciled Within EU+ Area**

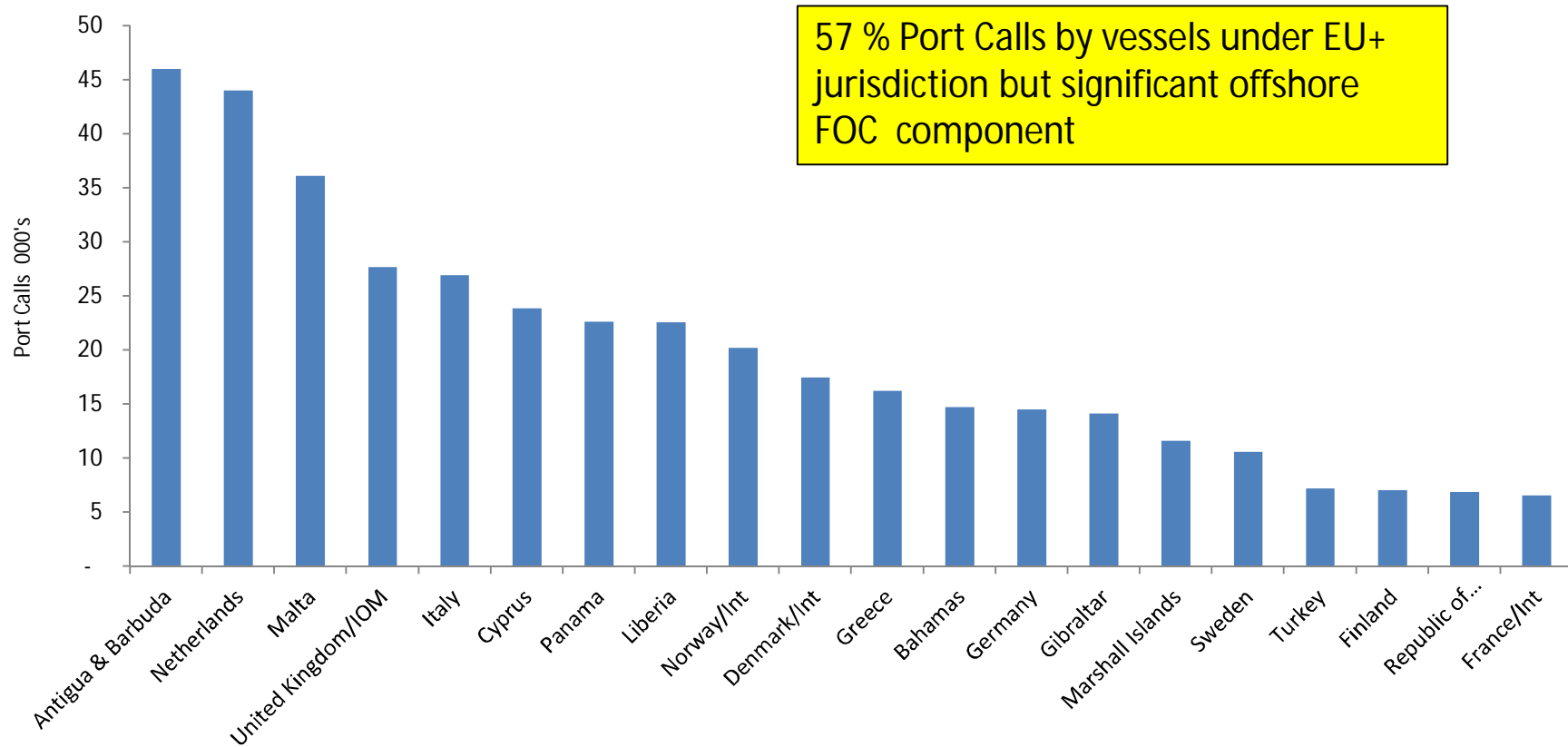


## Vessel Owners - Top 10 Countries of Domicile

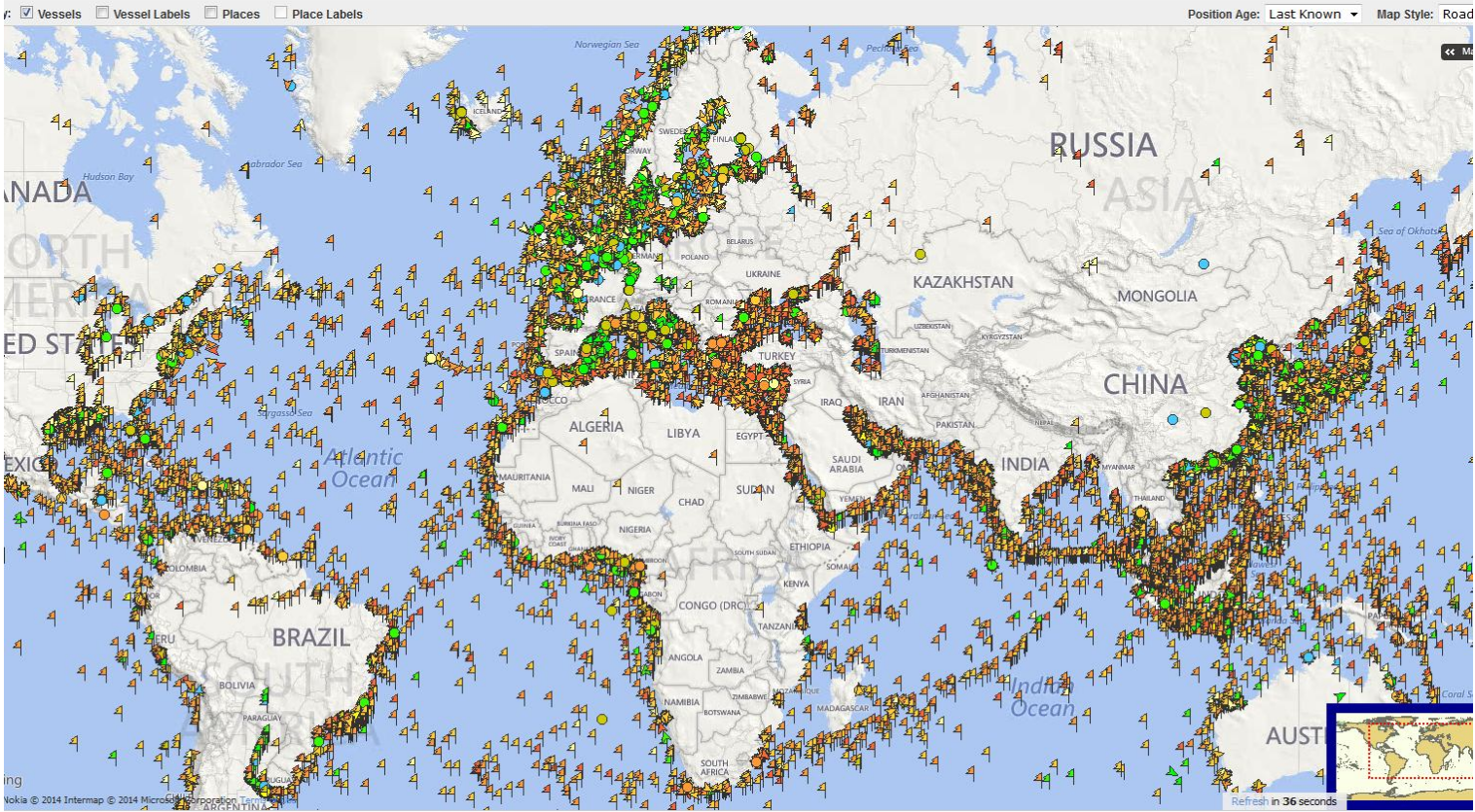
Country of Domicile	No Calls
Germany	108,597
Norway	56,129
Netherlands	38,470
Greece	33,188
Italy	28,999
Denmark	24,031
United Kingdom	21,697
Sweden	16,894
Turkey	16,796
Japan	10,732

Top 10 Owner Nationalities account for 75% of EU+ Port Calls

## EU+ Port Calls – Flag Profile Top 20



## EU+ Port Connectivity



## EU+ Port Connectivity

- **75% Vessels Port Calls intra EU+ (From/To Another EU+ Port)**

Shiptype	
Container	67%
Dry Bulk	46%
Gas	78%
General Cargo	79%
Reefer	61%
RORO	84%
Tanker	79%

## Top 10 External Partners

Country	Ranking (% Calls)
Russian Federation	19%
Turkey	15%
Algeria	8%
Morocco	7%
United States of America*	5%
Arab Republic of Egypt	4%
Canary Islands	4%
Gibraltar	3%
Ukraine	3%
Tunisia	3%

\*USA Ranks Second in Terms of Vessel Capacity

## Top 20 Global Ports

Absolute and relative decline of top European ports

2004			2013		
PORT	No Calls	DWT Capacity	PORT	No Calls	DWT Capacity
Singapore	43,183	1,357,855,631	Singapore	59,345	3,309,013,642
Hong Kong	27,193	744,594,296	Busan	24,661	601,429,422
Rotterdam	26,025	569,961,468	Rotterdam	24,070	731,337,147
Busan	19,974	343,624,819	Hong Kong	22,487	954,355,864
Kaohsiung	15,011	406,916,494	Shanghai	20,380	685,398,190
Antwerp	14,601	270,324,833	Ulsan	18,071	296,994,926
Hamburg	12,595	219,960,462	Chiba	17,548	198,472,506
Yokohama	11,472	228,866,183	Yokohama	16,452	260,416,623
Shanghai	10,469	232,705,156	Gwangyang	16,045	412,812,141
Nagoya	9,469	224,894,310	Kaohsiung	15,986	498,374,353
Port Klang	8,849	184,598,561	Nagoya	15,568	260,026,370
Keelung	8,353	131,070,860	Antwerp	13,908	364,815,938
Kobe	7,586	160,526,675	Xingang	12,646	550,145,479
Incheon	7,568	103,362,339	Port Klang	12,569	425,590,338
London	7,544	46,309,659	Kawasaki	11,883	148,530,315
Jakarta	6,970	80,301,265	Kobe	11,815	173,722,112
Osaka	6,738	98,250,562	Tanjung Pelepas	11,790	439,778,395
St. Petersburg	6,732	61,450,553	Mizushima	11,604	130,100,842
Bremerhaven	6,711	120,173,512	Hamburg	11,161	286,692,766
Tokyo	6,373	143,162,224	Tokyo	10,300	173,040,321

## Conclusions

- Shift away from small high-frequency vessel activity
- Significance of Container Sector in terms of size and activity
- EU+ ports remain a significant global player but unable to match growth rates of ROW driven predominantly by Asia but also ME Indian Sub Continent and Med Black Sea
- EU+ Port Shipowner customer base predominantly local



Thank You !

**Wally Mandryk**  
Manager - Market Intelligence Services

Lloyd's List Intelligence

Christchurch Court | 10-15 Newgate Street | London | EC1A 7HD | UK

**Direct line:** +44 (0)20 7017 4815  
**Switchboard:** +44 (0)20 7017 5000  
**Mobile:** +44 (0)7500 083660  
email: [wally.mandryk@informa.com](mailto:wally.mandryk@informa.com)  
web: [www.lloydslistintelligence.com](http://www.lloydslistintelligence.com)