

# Four Route Cape Tripcharter Average



LEN HOCKLEY

IMSF CONFERENCE  
HONG KONG, 31 MAY 2011

# Cape Tripcharter Average



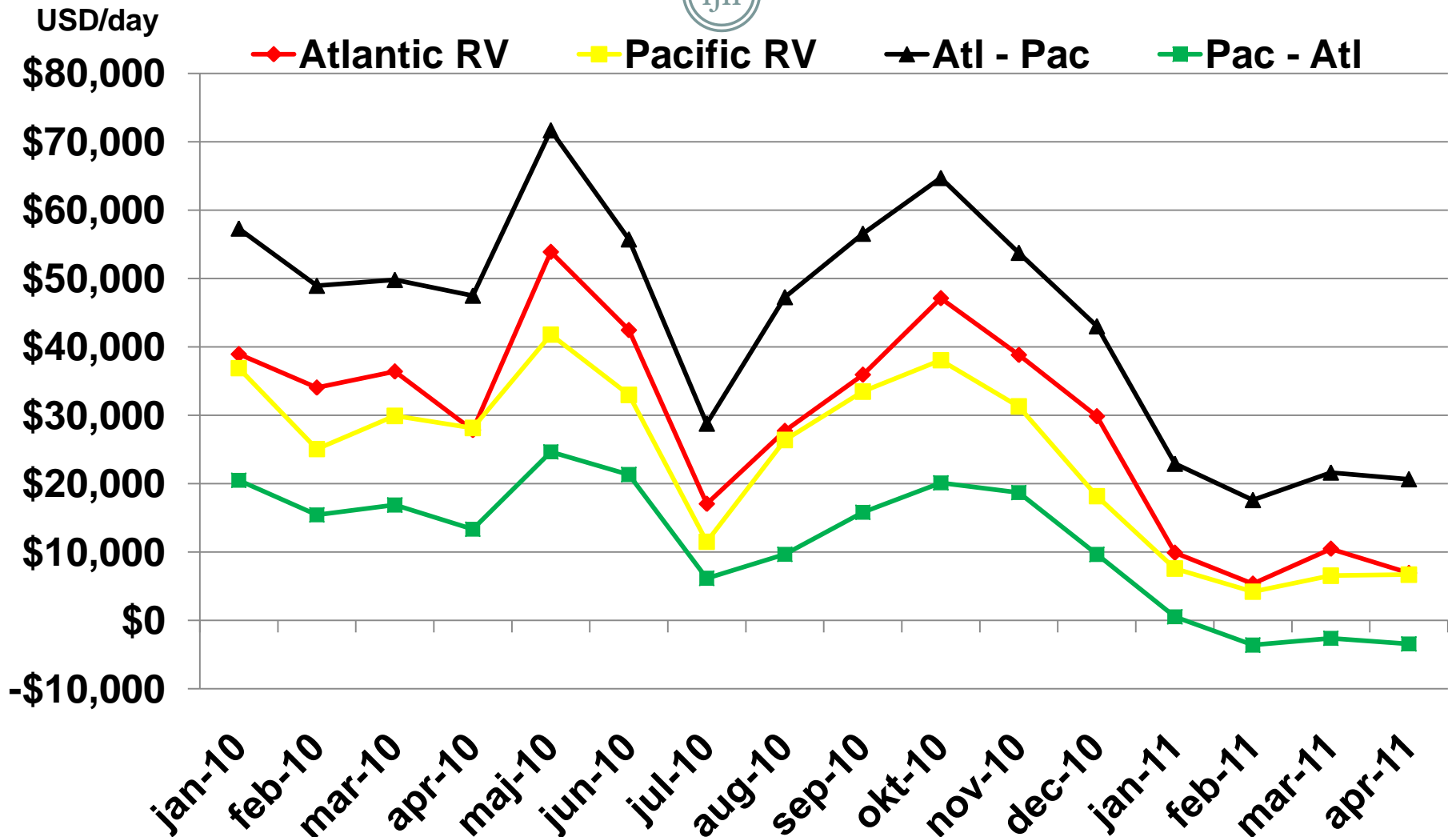
## ● THE RATE ASSESSMENT

- Published by the Baltic Exchange each working day
- Produced by a panel of shipbrokers
- Based on a standard 172,000 dwt Cape
- Used as a measure of the Cape freight market
- Used in FFAs (Forward Freight Assessments)

## ● THE FOUR CAPE TRIPCHARTER ROUTES

- Atlantic Round Voyage (hire Europe, ballast to Atlantic load port, discharge Europe)
- Pacific Round Voyage (hire Far East, ballast to Pacific load port, discharge Far East)
- Atlantic to Pacific (hire Europe, ballast to Atlantic load port, discharge Far East)
- Pacific to Atlantic (hire Far East, ballast to Pacific load port, discharge Europe)

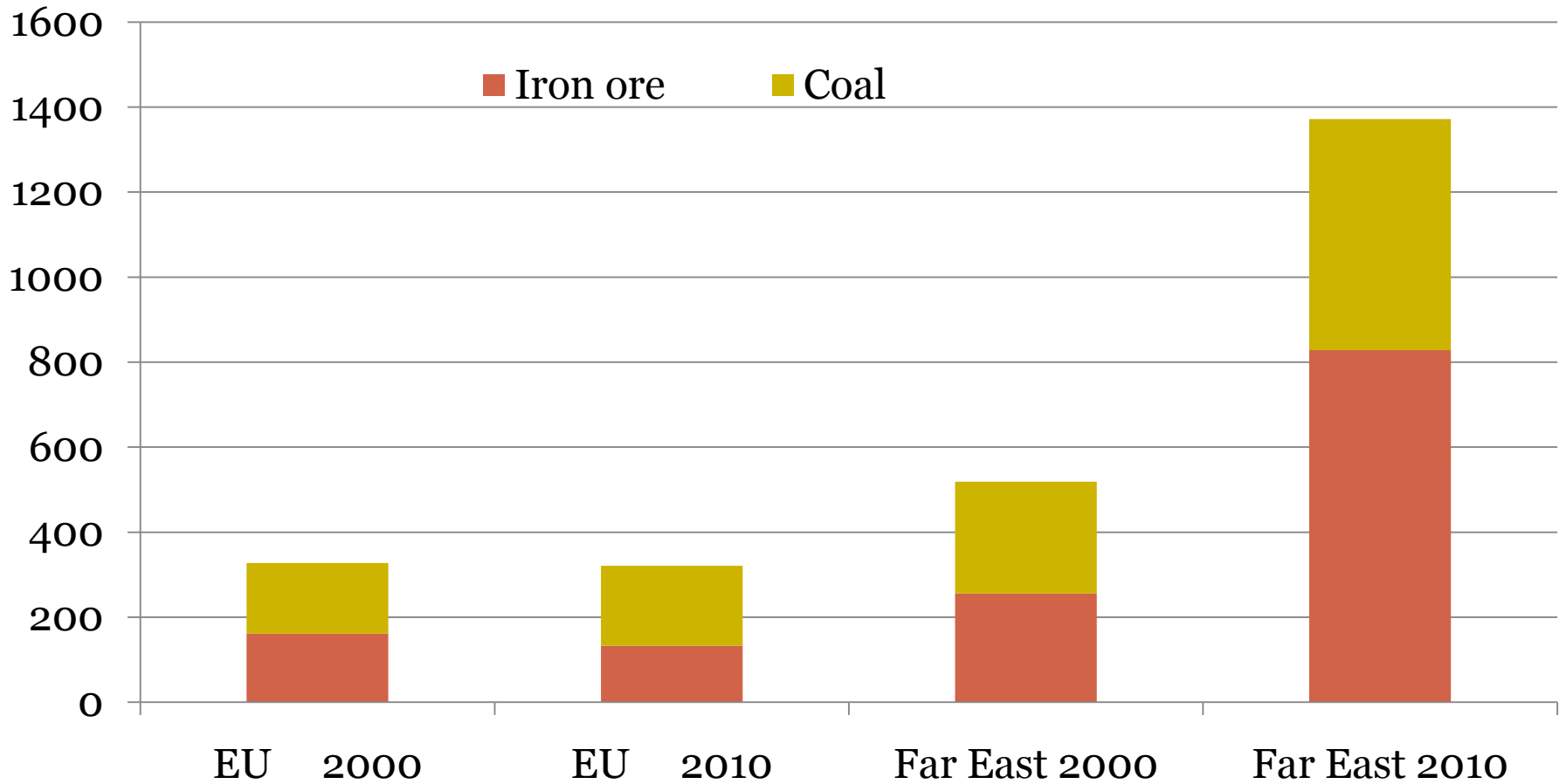
# Monthly Average Tripcharter Rates



# EU v Far East Coal & Iron Ore Imports



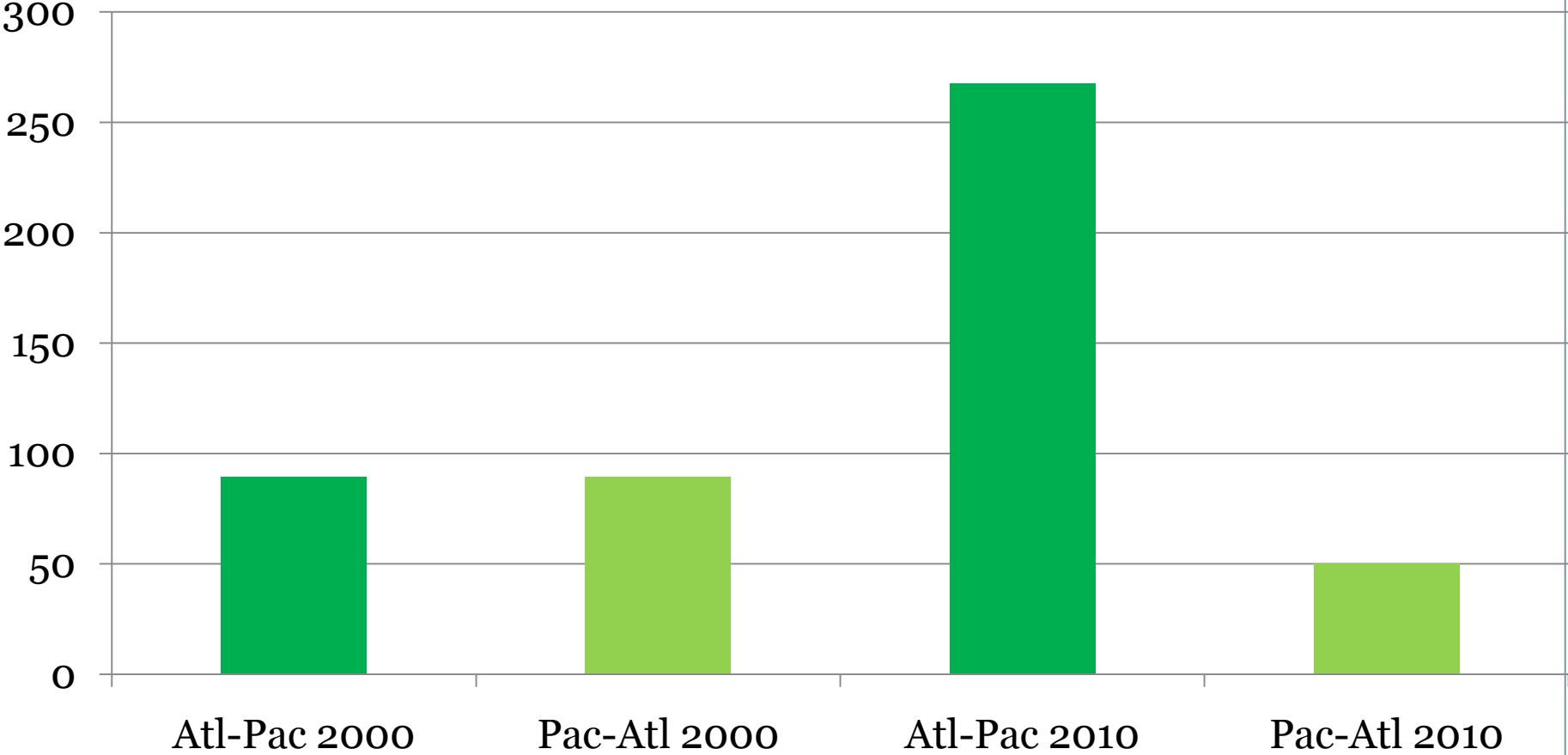
Million mt



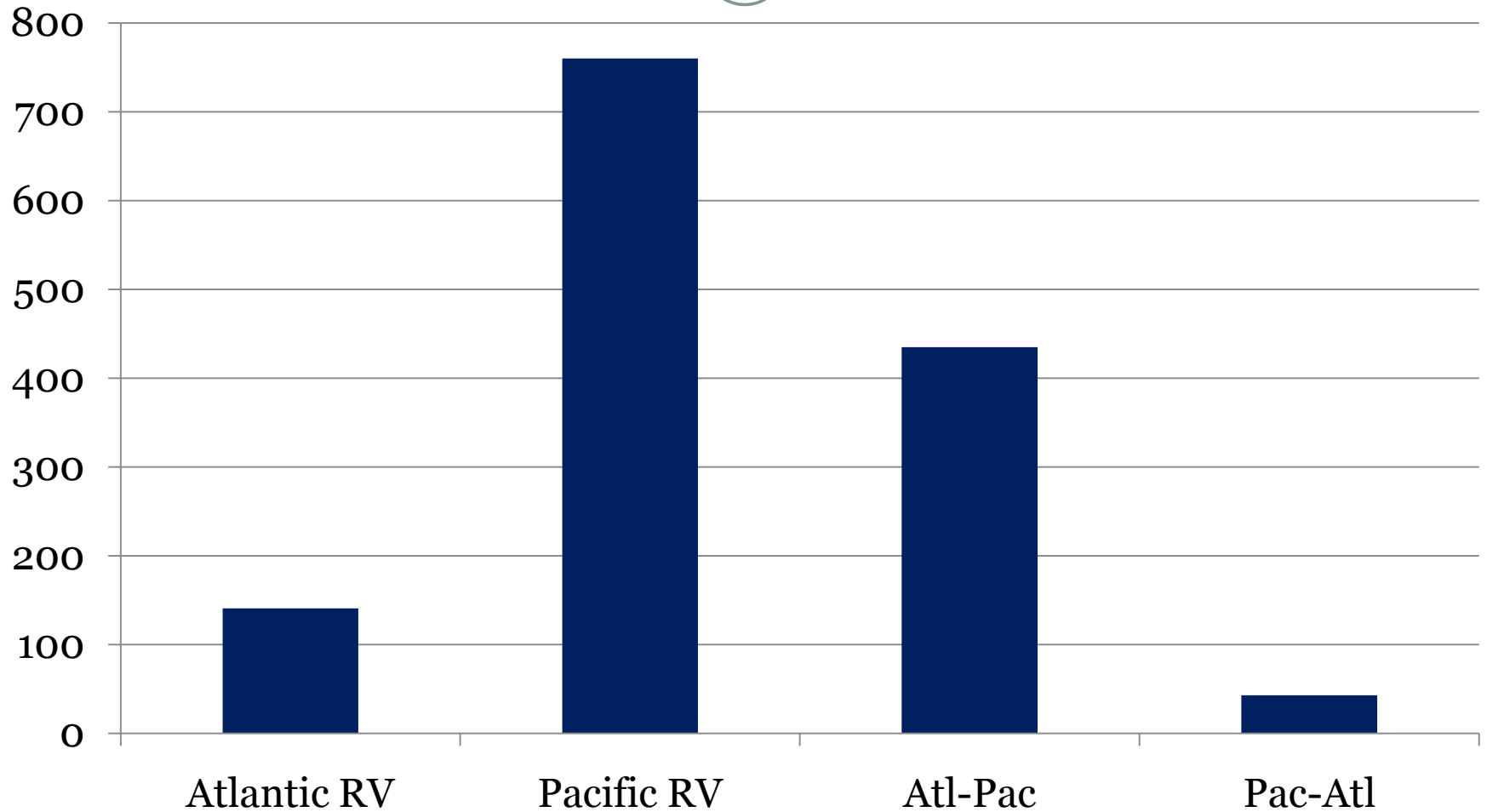
# Cape Traffic between Atlantic and Pacific



Million dwt



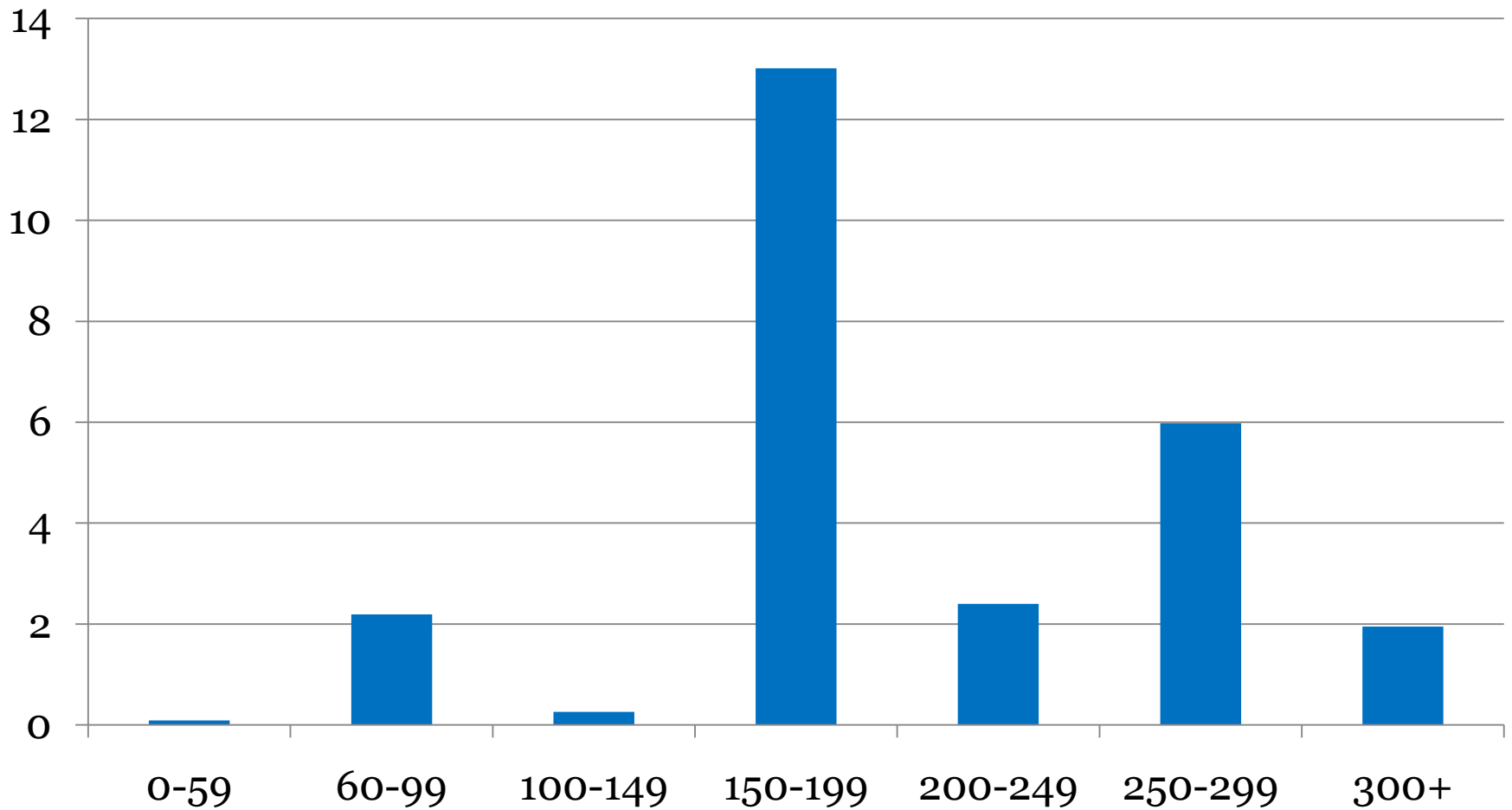
# 2010 Cape Spot and Trip Fixtures



# May 2010 Snapshot Vale Ship Traffic



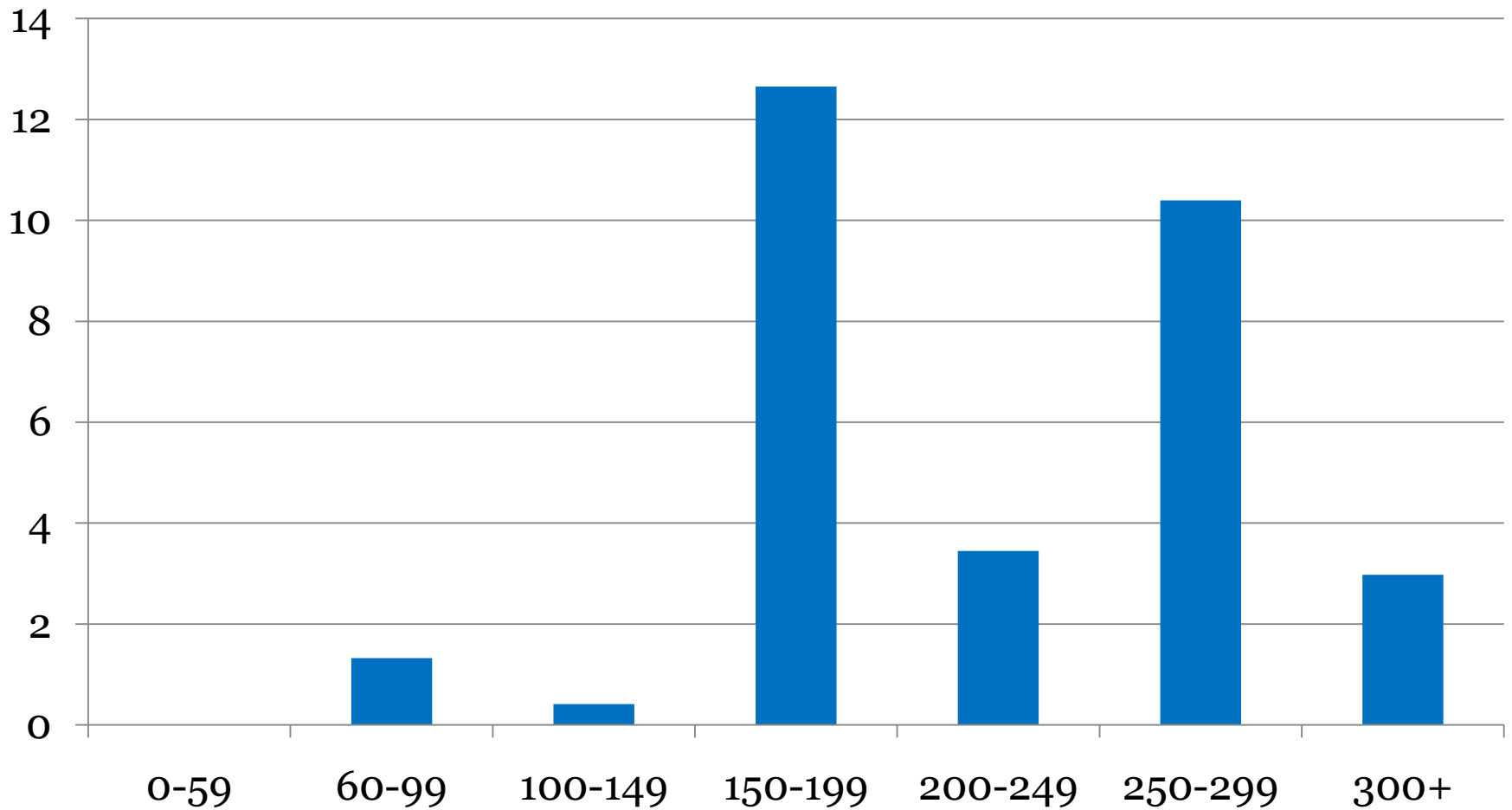
Million dwt



# May 2011 Snapshot Vale Ship Traffic



Million dwt

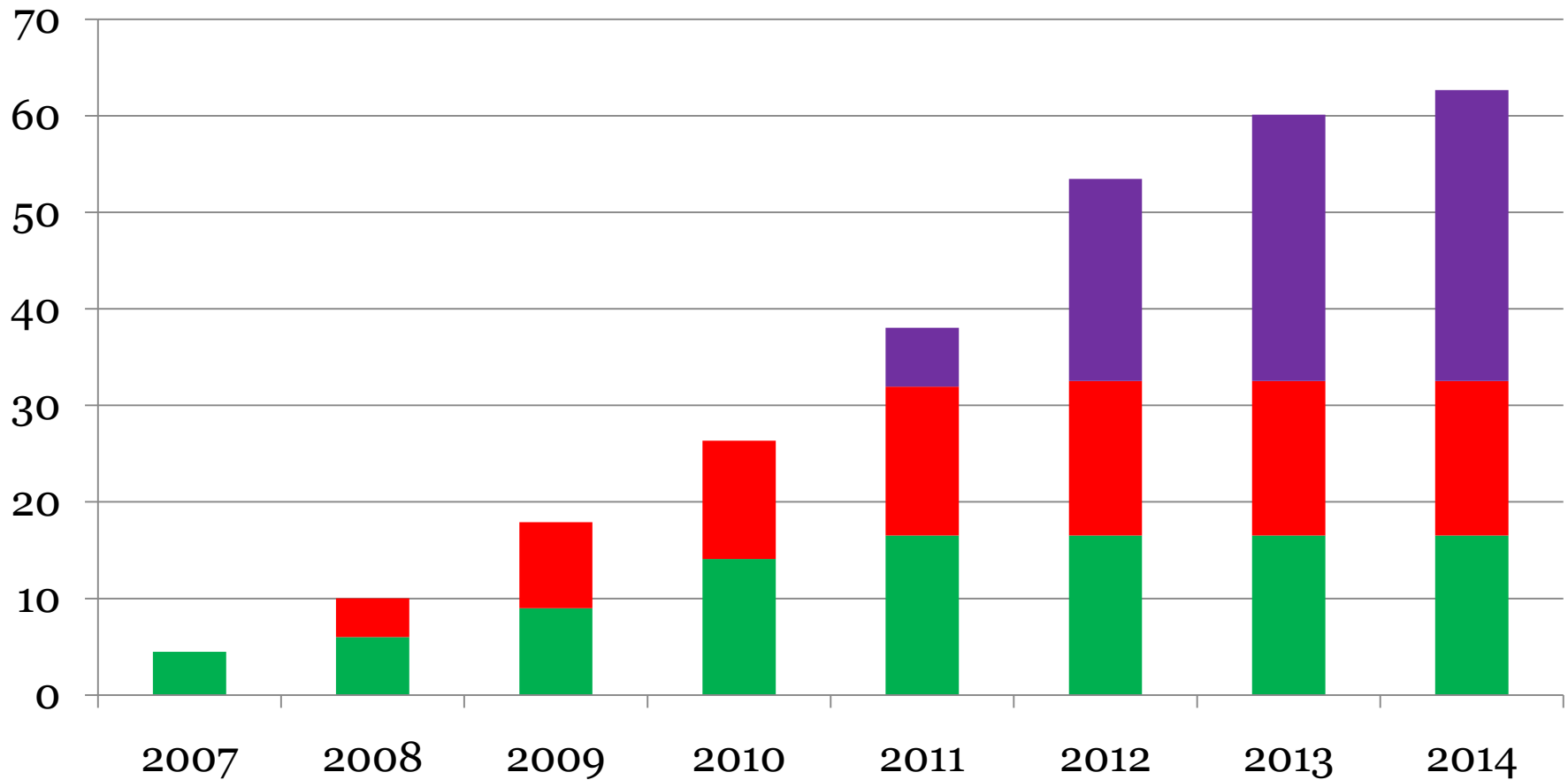


# End Year Fleet of Ore Carriers (250,000 dwt+)



Million dwt

Existing Conversions Newbuilding



# Outlook



- **OUTLOOK**

- Static Atlantic Cape market
- Rapidly expanding Pacific Cape market
- Shrinking Cape trade from the Pacific to Atlantic
- Standard Capes being squeezed out of key Atlantic to Pacific front-haul trade

- **OTHER DEVELOPMENTS**

- Enlargement of the Panama Canal to take Capes
- Impact of growth in Indian trade